



COMPONENTES

Confie e use!

CATÁLOGO 2026



COMPONENTES

Confie e use!

Quem somos

A **RP Componentes** é uma empresa brasileira com mais de 16 anos no mercado de componentes para próteses sobre implantes. Todos os componentes distribuídos pela **RP** possuem características de acoplamento ideais para ter uma conexão segura com os sistemas de implantes.

Para comprovação de sua segurança, eficácia e qualidade, foram realizados testes práticos, mecânicos e biológicos, assegurando que possuem resistência e estabilidade para exercer a função que foram indicados.

Todos os produtos comercializados pela **RP Componentes** são registrados e liberados pela **ANVISA**.

Missão, visão e valores



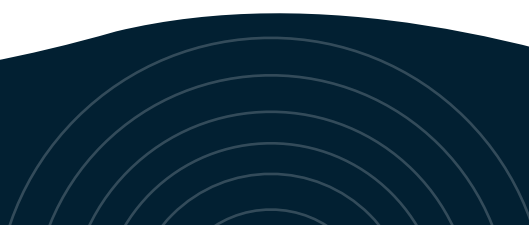
Fornecer produtos com qualidade garantida e certificada.



Apresentar soluções inovadoras, visando atender as necessidades dos profissionais do segmento odontológico.



Determinação e garra
Honestidade e ética
Equilíbrio Emocional
Humildade
Disciplina



Cone Morse

Utilização	Pág.	Utilização	Pág.
Astra Tech® - Sistema CM 3.5/4.0	07	Nobel Biocare® RP - Sistema CM 4.3/5.0 RP	28
BioConect® (11.5°) - BioCM 3.5/4.3/5.0	08	Osstem® - Sistema CM 3.5/4.0	29
Conexão® (22°) - Sistema CM 3.5/3.75/4.0	09	Plenum® (11.5°) - Modelo Unifit UF	30
Conexão® - Modelos CM Flash Fit/Torq Fit e Flex Gold Fit	10	Plenum® (16°) - Modelo Morsefit MF	31
Conexão® (16°) - Modelo Flash Gold GMF	11	Pross® (11.5°) - Sistema CM 3.5/3.75/4.0/4.3/5.0	32
DentFix® (11.5°) - Sistema CM 3.5/3.75/4.3/5.0	12	Signo Vinces® - Sistema CM 3.3/3.8/4.5/4.6	33
DentoFlex® (11.5°) - Sistema CM 3.5/3.75/4.0/4.25/5.0	13	Signo Vinces® (11.5°) - Modelo Ancor	34
Derig® (22°) - Sistema CMH 3.3/3.5/3.75/4.3	14	SIN® SW (16°) - Sistema CM 3.8/4.5/5.5	35
Derig® - Sistema CMI 3.3	15	SIN® (11.5°) - Sistema CM 3.5/4.3/5.0	36
DSP® (11.5°) - Sistema CM 3.5/3.75/3.8/4.0/4.3/4.5/5.0	16	Singular® (11.5°) - Sistema CM 3.5/3.75/4.0/4.3/5.0	37
Implacil de Bortoli® - Sistema CM 3.5/4.3/5.0	17	Singular® (16°) - Modelo GMC	38
INP® (11.5°) - Sistema CM 3.3/3.8/4.3/5.0	18	Systhex® (11.5°) - Sistema CM 3.5/4.3/5.0 Avantt	39
IntraOss® (11.5°) - Sistema CM 3.5/3.75/4.0/4.3	19	Straumann® NC - Sistema NC 3.3	40
IntraOss® (16°) - Modelo Grand Oss	20	Straumann® RC - Sistema RC 4.1	41
Kopp® (11.5°) - Modelo Morse Screw	21	Straumann® RN - Sistema RN 4.8	42
Medens® (10°) - Sistema CM 3.5/4.0/5.0	22	Straumann® RB/WB - Sistema RB/WB 3.5 A 6.5	43
Neodent® (11.5°) - Neodent CM 3.5/4.3/5.0	23	Titaniumfix® - Sistema CM 3.5/4.0	44
Neodent® GM (16°) - Sistema GM 3.5/3.75/4.0/4.3/5.0/6.0	24	Mis® CI - Sistema CM 3.75/4.2	45
Neodent® GM - Sistema GM 3.5/3.75/4.0/4.3/5.0/6.0	25	Mult Unit® - Sistema 4.8	46
Nobel Biocare® CC - Sistema CM 3.0 CC	26	Universal	47
Nobel Biocare® NP (22°) - Sistema CM 3.5 NP	27	GT	48

Conexão Externa

Utilização	Pág.	Utilização	Pág.
All Prime® - Hexágono Externo All Prime Select 3.5	50	INP® - Sistema HE 3.5/4.0	72
All Prime® - Hexágono Externo All Prime Select 4.1/5.0	51	IntraOss® - Sistema HE 3.25/3.5/3.75/4.0/4.1/4.3	73
BioConect® - BioHE 3.3	52	Kopp® - Hexágono Externo Hexa 3.3/3.75/4.0/5.0	74
BioConect® - BioHE 3.75/4.1	53	Medens® - Hexágono Externo 3.5	75
Bionnovation® - Sistema HE 3.3	54	Medens® - Sistema HE 4.0/5.0	76
Bionnovation® - Sistema HE 3.3/3.75/4.0/5.0	55	Neodent® - Sistema HE 3.3/3.5	77
Conexão® - Sistema HE 3.3/3.5	56	Neodent® - Sistema HE 3.75/4.0	78
Conexão® - Sistema HE 3.75/4.0/5.0	57	Pi Branemark® - Sistema HE 4.1	79
DentFix® - Sistema HE 3.3	58	Pross® - Sistema HE 3.5	80
DentFix® - Sistema HE 3.5/3.75/4.0/5.0	59	Pross® - Sistema HE 3.75/4.0/4.3/5.0	81
Derig® Sistema HE 3.75/5.0/5.5	60	Signo Vinces® - Mod. Integra 3.25 e mod. Duo e Ares Duo 3.8	82
Dentoflex® - Mod. Supreme 3.75 e mod. cilíndrico switch 3.25/3.6	61	Signo Vinces® - Sistema HE 3.75/4.0/4.1/4.6	83
Dentoflex® - Sistema HE 3.25/3.6/3.75/4.0/4.3/4.5/5.0/6.0	62	SIN® - Sistema HE 3.25/3.75/4.0/4.5/5.0	84
DSP® - Sistema HE 3.3	63	SIN® - Sistema HE 3.6 À 5.0	85
DSP® - Sistema HE 3.3/3.5/3.8/3.75/4.0/4.3/4.5/5.0	64	Singular® - Sistema HE 3.3/3.5	86
FGM® - VEZZA 3.3/3.8/4.3/5.0	65	Singular® - Sistema HE 3.75/4.0/4.3/5.0	87
Implalife® - Hexágono Externo All Prime Select 3.5	66	Systhex® - Sistema HE 3.3	88
Implalife® - Hexágono Externo All Prime Select 4.1/5.0	67	Systhex® - Sistema HE 3.5/3.75/4.0	89
Implacil de Bortoli® - Sistema HE 3.3/3.5	68	Titanium Fix® - Hexágono Externo 3.3 (plataforma expandida) e Hexágono Externo 3.75/4.0/4.5	90
Implacil de Bortoli® - Sistema HE 3.75/4.0/4.3/4.75/5.0	69	Restore® - Sistema HE 3.3	91
Implus - Baumer® - Sistema HE 3.3/3.5	70	Mult Unit® - Sistema 4.8	92
Implus - Baumer® - Sistema HE 3.75/4.0/5.0	71		

Conexão Interna

Utilização	Pág.	Utilização	Pág.
Conexão® - Sistema HI 3.75/4.0/4.3/5.0	94	SIN® - Sistema HI 3.8/4.5/5.0	98
Dentoflex® - Sistema HI 3.5 A 5.0	94	Systhex® - Sistema HI 3.75/4.0/4.3/5.0	99
DSP® - Sistema HI 3.8/4.0/4.3/4.5/5.0	95	Titanium Fix® - Sistema HI 3.75/4.0	99
Implacil de Bortoli® - Sistema HI 3.3/3.5 Sistema HI Maestro 3.5/4.0/5.0	95	Mult Unit - Sistema 4.8	100
Implacil de Bortoli® - Sistema HI 3.75/4.0/4.3/4.75/5.0	96	Uclafix	100
INP® Conus - Sistema HI 3.5/4.0	96	Overdenture	101
IntraOss® - Sistema HI 3.8/4.5/5.5	97	Instrumental Chave digital e torquímetro	102
MIS® - Sistema HI 3.3	97	Kits Chaves e Protético Plus	103
MIS® Seven - Sistema HI 3.7/4.2	98		

As referências de produtos de uma empresa são essenciais para ajudar os consumidores a entender e se conectar com os produtos oferecidos.

A RP Componentes possui em sua linha referências que seguem uma lógica para facilitar e agilizar o entendimento, abaixo o significado de cada uma.

Para a maioria, os três primeiros números se referem ao tipo de produto.

- | | | | | | |
|-----|---|-------------------------|------|---|---------------------------|
| 100 | ➔ | <i>Análogo</i> | P600 | ➔ | <i>Ucla Plástica</i> |
| 200 | ➔ | <i>Transfer</i> | 700 | ➔ | <i>Ucla Base Metálica</i> |
| 300 | ➔ | <i>Cicatrizador</i> | 800 | ➔ | <i>Mini Pilar</i> |
| 400 | ➔ | <i>Pilar Provisório</i> | 900 | ➔ | <i>Pilar O'Ring</i> |
| 500 | ➔ | <i>Pilar Definitivo</i> | | | |



Os três números seguintes se referem à família de produtos.

- | | | | | | | | | |
|-----|---|--------------------------|-----|---|------------------|-----|---|-----------------------|
| 703 | ➔ | <i>CM 3.5/4.3/5.0 ND</i> | 105 | ➔ | <i>HE 4.1 BR</i> | 209 | ➔ | <i>HI 3.75/4.3 UN</i> |
|-----|---|--------------------------|-----|---|------------------|-----|---|-----------------------|



Outras famílias de produtos

- | | | |
|-----|---|-------------------------------------|
| 005 | ➔ | <i>Componentes sobre Mini Pilar</i> |
| 007 | ➔ | <i>Componentes sobre Pilar GT</i> |

A seguir dos seis números iniciais, há uma letra, ela tem o seguinte significado:

Para Transfer indica se a moldeira é aberta ou fechada

- | | | | | | |
|-----------------|---|----------|------------------|---|----------|
| Moldeira Aberta | ➔ | A | Moldeira Fechada | ➔ | B |
|-----------------|---|----------|------------------|---|----------|



Para Cicatrizadores e Mini Pilares indica a altura de cinta:

Cinta 1mm ou 0.8mm para alguns sistemas → **A**

Cinta 2mm ou 1.5mm para alguns sistemas → **B**

Cinta 3mm ou 2.5mm para alguns sistemas → **C**

Cinta 4mm ou 3.5mm para alguns sistemas → **D**

Cinta 5mm ou 4.5mm para alguns sistemas → **E**

Cinta 6mm ou 5.5mm para alguns sistemas → **F**

Para qualquer tipo de pilar, indica se é componente com travamento ou sem.

Com Travamento Anti-Rotacional → **C**

Sem Travamento Rotacional → **S**

Exemplo de código:

P 6 0 0 1 0 5 C

Com travamento/ Anti-Rotacional
 Família de produtos HE 4.1
 Tipo de produto: Ucla Plástica

7 0 7 0 3 C C

Cinta 2.5mm
 Com travamento/ Anti-Rotacional
 Família de produtos CM ND
 Tipo de produto: Ucla Base Metálica



Quando o pilar possui além do travamento ou não, altura de cinta, cai o primeiro zero, ou seja, 700 vira 70 e inclui-se a letra correspondente à cinta no final.

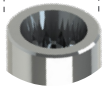
Sistema Cone Morse



Análogo
100701



Ø3.5 / 4.0mm



Rosca M1.6



Transfer mold. Aberta
200701A



Transfer mold. Fechada
200701B

Cicatrizador



300701B	H2mm
300701C	H3mm
300701D	H4mm
300701E	H5mm
300701F	H6mm



Pilar Provisório



400701C	400701S	H1mm
400701CB	400701SB	H2mm
400701CC	400701SC	H3mm
400701CD	400701SD	H4mm



Pilar Definitivo

500701A	H1mm
500701B	H2mm
500701C	H3mm
500701D	H4mm



Ucla Base Metálica



700701C	700701S	H1mm
700701CB	700701SB	H2mm
700701CC	700701SC	H3mm
700701CD	700701SD	H4mm



Mini pilar Cônico



800701A	H1mm
800701B	H2mm
800701C	H3mm
800701D	H4mm
800701E	H5mm
800701F	H6mm



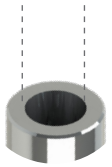
Parafuso de Fixação
MI6HAT



Análogo
100703



Ø2.5mm



- Rosca M1.8
- Ângulação Interna de 11.5°



Transfer
mold. Aberta
200703A



Transfer
mold. Fechada
200703B



Cicatrizador
Tampa
301703

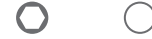


Cicatrizador

Ø3.3		Ø4.5	
300703A	H0.8mm	300704A	H0.8mm
300703B	H1.5mm	300704B	H1.5mm
300703C	H2.5mm	300704C	H2.5mm
300703D	H3.5mm	300704D	H3.5mm
300703E	H4.5mm	300704E	H4.5mm
300703F	H5.5mm	300704F	H5.5mm



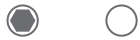
Pilar
Provisório



40703CA	40703SA	H0.8mm
40703CB	40703SB	H1.5mm
40703CC	40703SC	H2.5mm
400703CD	400703SD	H3.5mm
400703CE	400703SE	H4.5mm



Ucla Base
Metálica



70703CA	70703SA	H0.8mm
70703CB	70703SB	H1.5mm
70703CC	70703SC	H2.5mm
70703CD	70703SD	H3.5mm
70703CE	70703SE	H4.5mm



Mini pilar
Cônico



800703A	H0.8mm	800703D	H3.5mm
800703B	H1.5mm	800703E	H4.5mm
800703C	H2.5mm	800703F	H5.5mm



Mini Pilar - Âng. 17°



Mini Pilar - Âng. 30°

80703BG	H1.5mm	80703BH	H1.5mm
80703CG	H2.5mm	80703CH	H2.5mm
80703DG	H3.5mm	80703DH	H3.5mm



Pilar
O'Ring



900703A	H0.8mm
900703B	H1.5mm
900703C	H2.5mm
900703D	H3.5mm
900703E	H4.5mm
900703F	H5.5mm



Parafuso
de Fixação

○ M18HND



Pilar GT



*Componentes Sobre o Pilar GT Pág.35

801007A	H0.8mm
801007B	H1.5mm
801007C	H2.5mm
801007D	H3.5mm
801007E	H4.5mm
801007F	H5.5mm



Pilar
Universal



*Componentes Sobre o
Pilar Universal Pág.35

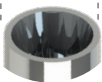
50708DA	Ø3.3 x 4mm - H0.8mm	50709DA	Ø4.5 x 4mm - H0.8mm	50708FA	Ø3.3 x 6mm - H0.8mm	50709FA	Ø4.5 x 6mm - H0.8mm
50708DB	Ø3.3 x 4mm - H1.5mm	50709DB	Ø4.5 x 4mm - H1.5mm	50708FB	Ø3.3 x 6mm - H1.5mm	50709FB	Ø4.5 x 6mm - H1.5mm
50708DC	Ø3.3 x 4mm - H2.5mm	50709DC	Ø4.5 x 4mm - H2.5mm	50708FC	Ø3.3 x 6mm - H2.5mm	50709FC	Ø4.5 x 6mm - H2.5mm
50708DD	Ø3.3 x 4mm - H3.5mm	50709DD	Ø4.5 x 4mm - H3.5mm	50708FD	Ø3.3 x 6mm - H3.5mm	50709FD	Ø4.5 x 6mm - H3.5mm
50708DE	Ø3.3 x 4mm - H4.5mm	50709DE	Ø4.5 x 4mm - H4.5mm	50708FE	Ø3.3 x 6mm - H4.5mm	50709FE	Ø4.5 x 6mm - H4.5mm
50708DF	Ø3.3 x 4mm - H5.5mm	50709DF	Ø4.5 x 4mm - H5.5mm	50708FF	Ø3.3 x 6mm - H5.5mm	50709FF	Ø4.5 x 6mm - H5.5mm



Análogo
100705



Ø3.5 / 3.75 / 4.0mm



Rosca M1.6



Transfer
mold. Aberta

200705A



Transfer
mold. Fechada

200705B



Cicatrizador

Ø3.6

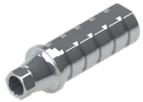
300700A	H0.8mm
300700B	H1.5mm
300700C	H2.5mm
300700D	H3.5mm
300700E	H4.5mm
300700F	H5.5mm

Ø4.5



Cicatrizador

300705A	H0.8mm
300705B	H1.5mm
300705C	H2.5mm
300705D	H3.5mm
300705E	H4.5mm
300705F	H5.5mm



Pilar
Provisório



400705C	400705S	H1.0mm
400705CC	400705SC	H2.5mm
400705CD	400705SD	H3.5mm
400705CE	400705SE	H4.5mm



Pilar
Definitivo

500705A	H1.5mm
500705B	H2.5mm
500705C	H3.5mm
500705D	H4.5mm



Ucla Base
Metálica



700705C	700705S	H1.2mm
700705CC	700705SC	H2.5mm
700705CD	700705SD	H3.5mm
700705CE	700705SE	H4.5mm



Mini Pilar
Cônico



800705A	H0.8mm
800705B	H1.5mm
800705C	H2.5mm
800705D	H3.5mm
800705E	H4.5mm
800705F	H5.5mm



Mini Pilar - Âng. 17°

80705CG	H2.5mm
80705DG	H3.5mm



Mini Pilar - Âng. 30°

80705DH	H3.5mm
80705EH	H4.5mm



Pilar
O'Ring



900705A	H0.8mm
900705B	H1.5mm
900705C	H2.5mm
900705D	H3.5mm
900705E	H4.5mm
900705F	H5.5mm



Parafuso
de Fixação

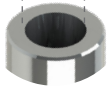
MI6HCN



Análogo
100703



Ø25mm



- Rosca M1.8
- Ângulação Interna de 11.5°



Transfer
mold. Aberta
200703A



Transfer
mold. Fechada
200703B



Cicatrizador
Tampa
301703



Cicatrizador

Ø3.3		Ø4.5	
300703A	H0.8mm	300704A	H0.8mm
300703B	H1.5mm	300704B	H1.5mm
300703C	H2.5mm	300704C	H2.5mm
300703D	H3.5mm	300704D	H3.5mm
300703E	H4.5mm	300704E	H4.5mm
300703F	H5.5mm	300704F	H5.5mm



Pilar
Provisório



40703CA	40703SA	H0.8mm
40703CB	40703SB	H1.5mm
40703CC	40703SC	H2.5mm
400703CD	400703SD	H3.5mm
400703CE	400703SE	H4.5mm



Ucla Base
Metálica



70703CA	70703SA	H0.8mm
70703CB	70703SB	H1.5mm
70703CC	70703SC	H2.5mm
70703CD	70703SD	H3.5mm
70703CE	70703SE	H4.5mm



Mini pilar
Cônico



800703A	H0.8mm	800703D	H3.5mm
800703B	H1.5mm	800703E	H4.5mm
800703C	H2.5mm	800703F	H5.5mm



Mini Pilar - Âng. 17°



Mini Pilar - Âng. 30°

80703BG	H1.5mm	80703BH	H1.5mm
80703CG	H2.5mm	80703CH	H2.5mm
80703DG	H3.5mm	80703DH	H3.5mm



Pilar
O'Ring



900703A	H0.8mm
900703B	H1.5mm
900703C	H2.5mm
900703D	H3.5mm
900703E	H4.5mm
900703F	H5.5mm



Parafuso
de Fixação

○ M18HND



Pilar GT



*Componentes Sobre o Pilar GT Pág.35

801007A	H0.8mm
801007B	H1.5mm
801007C	H2.5mm
801007D	H3.5mm
801007E	H4.5mm
801007F	H5.5mm



Pilar
Universal



*Componentes Sobre o
Pilar Universal Pág.35

50708DA	Ø3.3 x 4mm - H0.8mm	50709DA	Ø4.5 x 4mm - H0.8mm	50708FA	Ø3.3 x 6mm - H0.8mm	50709FA	Ø4.5 x 6mm - H0.8mm
50708DB	Ø3.3 x 4mm - H1.5mm	50709DB	Ø4.5 x 4mm - H1.5mm	50708FB	Ø3.3 x 6mm - H1.5mm	50709FB	Ø4.5 x 6mm - H1.5mm
50708DC	Ø3.3 x 4mm - H2.5mm	50709DC	Ø4.5 x 4mm - H2.5mm	50708FC	Ø3.3 x 6mm - H2.5mm	50709FC	Ø4.5 x 6mm - H2.5mm
50708DD	Ø3.3 x 4mm - H3.5mm	50709DD	Ø4.5 x 4mm - H3.5mm	50708FD	Ø3.3 x 6mm - H3.5mm	50709FD	Ø4.5 x 6mm - H3.5mm
50708DE	Ø3.3 x 4mm - H4.5mm	50709DE	Ø4.5 x 4mm - H4.5mm	50708FE	Ø3.3 x 6mm - H4.5mm	50709FE	Ø4.5 x 6mm - H4.5mm
50708DF	Ø3.3 x 4mm - H5.5mm	50709DF	Ø4.5 x 4mm - H5.5mm	50708FF	Ø3.3 x 6mm - H5.5mm	50709FF	Ø4.5 x 6mm - H5.5mm



Análogo
100720



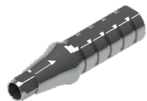
Cicatrizador



Cicatrizador

Ø3.3	
300720A	H0.8mm
300720B	H1.5mm
300720C	H2.5mm
300720D	H3.5mm
300720E	H4.5mm
300720F	H5.5mm

Ø4.5	
300721A	H0.8mm
300721B	H1.5mm
300721C	H2.5mm
300721D	H3.5mm
300721E	H4.5mm
300721F	H5.5mm



Pilar
Provisório

Pilar Provisório		
40720CA	40720SA	H0.8mm
40720CB	40720SB	H1.5 mm
40720CC	40720SC	H2.5mm
40720CD	40720SD	H3.5mm



Pilar
Definitivo

Pilar Definitivo	
500720A	H0.8mm
500720B	H1.5mm
500720C	H2.5mm
500720D	H3.5mm
500720E	H4.5mm
500720F	H5.5mm



Ucla Base
Metálica

Ucla Base Metálica		
700720C	700720S	H0.8mm
700720CB	700720SB	H1.5 mm
700720CC	700720SC	H2.5mm
700720CD	700720SD	H3.5mm



Mini Pilar
Cônico



Mini Pilar Cônico	
800720A	H0.8mm
800720B	H1.5mm
800720C	H2.5mm
800720D	H3.5mm
800720E	H4.5mm
800720F	H5.5mm



Mini Pilar - Âng. 17°

80720BG	H1.5mm
80720CG	H2.5mm
80720DG	H3.5mm



Mini Pilar - Âng. 30°

80720BH	H1.5mm
80720CH	H2.5mm
80720DH	H3.5mm



Parafuso
de Fixação

M16HCAC



Pilar
Universal



*Componentes Sobre o
Pilar Universal Pág.35

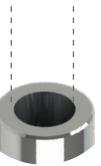
5070IDA	Ø3.3 x 4mm - H0.8mm	5070IFA	Ø3.3 x 6mm - H0.8mm	50702DA	Ø4.5 x 4mm - H0.8mm	50702FA	Ø4.5 x 6mm - H0.8mm
5070IDB	Ø3.3 x 4mm - H1.5mm	5070IFB	Ø3.3 x 6mm - H1.5mm	50702DB	Ø4.5 x 4mm - H1.5mm	50702FB	Ø4.5 x 6mm - H1.5mm
5070IDC	Ø3.3 x 4mm - H2.5mm	5070IFC	Ø3.3 x 6mm - H2.5mm	50702DC	Ø4.5 x 4mm - H2.5mm	50702FC	Ø4.5 x 6mm - H2.5mm
5070IDD	Ø3.3 x 4mm - H3.5mm	5070IFD	Ø3.3 x 6mm - H3.5mm	50702DD	Ø4.5 x 4mm - H3.5mm	50702FD	Ø4.5 x 6mm - H3.5mm
5070IDE	Ø3.3 x 4mm - H4.5mm	5070IFE	Ø3.3 x 6mm - H4.5mm	50702DE	Ø4.5 x 4mm - H4.5mm	50702FE	Ø4.5 x 6mm - H4.5mm
5070IDF	Ø3.3 x 4mm - H5.5mm	5070IFF	Ø3.3 x 6mm - H5.5mm	50702DF	Ø4.5 x 4mm - H5.5mm	50702FF	Ø4.5 x 6mm - H5.5mm



Análogo
100703



Ø2.5mm



- Rosca M1.8
- Ângulação Interna de 11.5°



Transfer
mold. Aberta
200703A



Transfer
mold. Fechada
200703B



Cicatrizador
Tampa
301703



Cicatrizador

Ø3.3		Ø4.5	
300703A	H0.8mm	300704A	H0.8mm
300703B	H1.5mm	300704B	H1.5mm
300703C	H2.5mm	300704C	H2.5mm
300703D	H3.5mm	300704D	H3.5mm
300703E	H4.5mm	300704E	H4.5mm
300703F	H5.5mm	300704F	H5.5mm



Pilar
Provisório



40703CA	40703SA	H0.8mm
40703CB	40703SB	H1.5mm
40703CC	40703SC	H2.5mm
400703CD	400703SD	H3.5mm
400703CE	400703SE	H4.5mm



Ucla Base
Metálica



70703CA	70703SA	H0.8mm
70703CB	70703SB	H1.5mm
70703CC	70703SC	H2.5mm
70703CD	70703SD	H3.5mm
70703CE	70703SE	H4.5mm



Mini pilar
Cônico



800703A	H0.8mm	800703D	H3.5mm
800703B	H1.5mm	800703E	H4.5mm
800703C	H2.5mm	800703F	H5.5mm



Mini Pilar - Âng. 17°



Mini Pilar - Âng. 30°

80703BG	H1.5mm	80703BH	H1.5mm
80703CG	H2.5mm	80703CH	H2.5mm
80703DG	H3.5mm	80703DH	H3.5mm



Pilar
O'Ring



900703A	H0.8mm
900703B	H1.5mm
900703C	H2.5mm
900703D	H3.5mm
900703E	H4.5mm
900703F	H5.5mm



Parafuso
de Fixação

Ø M18HND



Pilar GT



*Componentes Sobre o Pilar GT Pág.35

801007A	H0.8mm
801007B	H1.5mm
801007C	H2.5mm
801007D	H3.5mm
801007E	H4.5mm
801007F	H5.5mm



Pilar
Universal



*Componentes Sobre o
Pilar Universal Pág.35

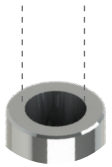
50708DA	Ø3.3 x 4mm - H0.8mm	50709DA	Ø4.5 x 4mm - H0.8mm	50708FA	Ø3.3 x 6mm - H0.8mm	50709FA	Ø4.5 x 6mm - H0.8mm
50708DB	Ø3.3 x 4mm - H1.5mm	50709DB	Ø4.5 x 4mm - H1.5mm	50708FB	Ø3.3 x 6mm - H1.5mm	50709FB	Ø4.5 x 6mm - H1.5mm
50708DC	Ø3.3 x 4mm - H2.5mm	50709DC	Ø4.5 x 4mm - H2.5mm	50708FC	Ø3.3 x 6mm - H2.5mm	50709FC	Ø4.5 x 6mm - H2.5mm
50708DD	Ø3.3 x 4mm - H3.5mm	50709DD	Ø4.5 x 4mm - H3.5mm	50708FD	Ø3.3 x 6mm - H3.5mm	50709FD	Ø4.5 x 6mm - H3.5mm
50708DE	Ø3.3 x 4mm - H4.5mm	50709DE	Ø4.5 x 4mm - H4.5mm	50708FE	Ø3.3 x 6mm - H4.5mm	50709FE	Ø4.5 x 6mm - H4.5mm
50708DF	Ø3.3 x 4mm - H5.5mm	50709DF	Ø4.5 x 4mm - H5.5mm	50708FF	Ø3.3 x 6mm - H5.5mm	50709FF	Ø4.5 x 6mm - H5.5mm



Análogo
100703



Ø2.5mm



- Rosca M1.8
- Ângulação Interna de 11.5°



Transfer
mold. Aberta
200703A



Transfer
mold. Fechada
200703B



Cicatrizador
Tampa
301703



Cicatrizador

Ø3.3		Ø4.5	
300703A	H0.8mm	300704A	H0.8mm
300703B	H1.5mm	300704B	H1.5mm
300703C	H2.5mm	300704C	H2.5mm
300703D	H3.5mm	300704D	H3.5mm
300703E	H4.5mm	300704E	H4.5mm
300703F	H5.5mm	300704F	H5.5mm



Pilar
Provisório



40703CA	40703SA	H0.8mm
40703CB	40703SB	H1.5mm
40703CC	40703SC	H2.5mm
400703CD	400703SD	H3.5mm
400703CE	400703SE	H4.5mm



Ucla Base
Metálica



70703CA	70703SA	H0.8mm
70703CB	70703SB	H1.5mm
70703CC	70703SC	H2.5mm
70703CD	70703SD	H3.5mm
70703CE	70703SE	H4.5mm



Mini pilar
Cônico



800703A	H0.8mm	800703D	H3.5mm
800703B	H1.5mm	800703E	H4.5mm
800703C	H2.5mm	800703F	H5.5mm



Mini Pilar - Âng. 17°



Mini Pilar - Âng. 30°

80703BG	H1.5mm	80703BH	H1.5mm
80703CG	H2.5mm	80703CH	H2.5mm
80703DG	H3.5mm	80703DH	H3.5mm



Pilar
O'Ring



900703A	H0.8mm
900703B	H1.5mm
900703C	H2.5mm
900703D	H3.5mm
900703E	H4.5mm
900703F	H5.5mm



Parafuso
de Fixação

○ M18HND



Pilar GT



*Componentes Sobre o Pilar GT Pág.35

801007A	H0.8mm
801007B	H1.5mm
801007C	H2.5mm
801007D	H3.5mm
801007E	H4.5mm
801007F	H5.5mm



Pilar
Universal



*Componentes Sobre o
Pilar Universal Pág.35

50708DA	Ø3.3 x 4mm - H0.8mm	50709DA	Ø4.5 x 4mm - H0.8mm	50708FA	Ø3.3 x 6mm - H0.8mm	50709FA	Ø4.5 x 6mm - H0.8mm
50708DB	Ø3.3 x 4mm - H1.5mm	50709DB	Ø4.5 x 4mm - H1.5mm	50708FB	Ø3.3 x 6mm - H1.5mm	50709FB	Ø4.5 x 6mm - H1.5mm
50708DC	Ø3.3 x 4mm - H2.5mm	50709DC	Ø4.5 x 4mm - H2.5mm	50708FC	Ø3.3 x 6mm - H2.5mm	50709FC	Ø4.5 x 6mm - H2.5mm
50708DD	Ø3.3 x 4mm - H3.5mm	50709DD	Ø4.5 x 4mm - H3.5mm	50708FD	Ø3.3 x 6mm - H3.5mm	50709FD	Ø4.5 x 6mm - H3.5mm
50708DE	Ø3.3 x 4mm - H4.5mm	50709DE	Ø4.5 x 4mm - H4.5mm	50708FE	Ø3.3 x 6mm - H4.5mm	50709FE	Ø4.5 x 6mm - H4.5mm
50708DF	Ø3.3 x 4mm - H5.5mm	50709DF	Ø4.5 x 4mm - H5.5mm	50708FF	Ø3.3 x 6mm - H5.5mm	50709FF	Ø4.5 x 6mm - H5.5mm



Análogo
100705



Ø3.5mm



Rosca M1.6



Transfer
mold. Aberta
200705A



Transfer
mold. Fechada
200705B



Cicatrizador

Ø3.6	
300700A	H0.8mm
300700B	H1.5mm
300700C	H2.5mm
300700D	H3.5mm
300700E	H4.5mm
300700F	H5.5mm



Cicatrizador

Ø4.5	
300705A	H0.8mm
300705B	H1.5mm
300705C	H2.5mm
300705D	H3.5mm
300705E	H4.5mm
300705F	H5.5mm



Pilar
Provisório



400705C	400705S	H1.0mm
400705CC	400705SC	H2.5mm
400705CD	400705SD	H3.5mm
400705CE	400705SE	H4.5mm



Pilar
Definitivo

500705A	H1.5mm
500705B	H2.5mm
500705C	H3.5mm
500705D	H4.5mm



Ucla Base
Metálica



700705C	700705S	H1.2mm
700705CC	700705SC	H2.5mm
700705CD	700705SD	H3.5mm
700705CE	700705SE	H4.5mm



Mini Pilar
Cônico



800705A	H0.8mm
800705B	H1.5mm
800705C	H2.5mm
800705D	H3.5mm
800705E	H4.5mm
800705F	H5.5mm



Mini Pilar - Âng. 17°

80705CG	H2.5mm
80705DG	H3.5mm



Mini Pilar - Âng. 30°



80705DH	H3.5mm
80705EH	H4.5mm



Parafuso
de Fixação

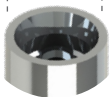
○ M16HEB



Análogo
100750



Ø3.5mm



Rosca M1.6



Transfer
mold. Aberta
200750A



Transfer
mold. Fechada
200750B



Cicatrizador
Tampa
301750



Cicatrizador

300750B	H2mm
300750C	H3.5mm
300750E	H5mm
300750F	H6mm



Pilar
Provisório

400750C	400750S	H1.3mm
400750CC	400750SC	H3mm
400750CD	400750SD	H4mm
400750CE	400750SE	H5mm



Ucla Base
Metálica

700750C	700750S	H1mm
700750CC	700750SC	H3mm
700750CD	700750SD	H4mm
700750CE	700750SE	H5mm



Mini Pilar
Cônico



800750A	H1mm
800750B	H2mm
800750C	H3mm
800750D	H4mm
800750E	H5mm
800750F	H6mm



Mini Pilar - Âng. 17°

80750BG	H2mm
80750CG	H3mm
80750DG	H4mm



Mini Pilar - Âng. 30°

80750CH	H3mm
80750DH	H4mm



Pilar O'Ring

900750B	H2mm
900750C	H3.5mm
900750E	H5mm
900750F	H6mm



Parafuso
de Fixação



M16TNC

Prótese cimentada

Análogo
CI



10750DD	Ø3.5 x 4mm
10750DF	Ø3.5 x 5.5mm
10750ED	Ø5 x 4mm
10750EF	Ø5 x 5.5mm



Pilar
Definitivo CI

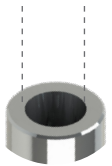
5750DDA	Ø3.5 x 4mm - H1mm
5750DDB	Ø3.5 x 4mm - H2mm
5750DDC	Ø3.5 x 4mm - H3mm
5750DFA	Ø3.5 x 5.5mm - H1mm
5750DFB	Ø3.5 x 5.5mm - H2mm
5750DFC	Ø3.5 x 5.5mm - H3mm

5750EDA	Ø5 x 4mm - H1mm
5750EDB	Ø5 x 4mm - H2mm
5750EDC	Ø5 x 4mm - H3mm
5750EFA	Ø5 x 5.5mm - H1mm
5750EFB	Ø5 x 5.5mm - H2mm
5750EFC	Ø5 x 5.5mm - H3mm

Análogo
100703



Ø25mm



- Rosca M1.8
- Ângulação Interna de 11.5°



Transfer
mold. Aberta
200703A



Transfer
mold. Fechada
200703B



Cicatrizador
Tampa
301703



Cicatrizador

Ø3.3		Ø4.5	
300703A	H0.8mm	300704A	H0.8mm
300703B	H1.5mm	300704B	H1.5mm
300703C	H2.5mm	300704C	H2.5mm
300703D	H3.5mm	300704D	H3.5mm
300703E	H4.5mm	300704E	H4.5mm
300703F	H5.5mm	300704F	H5.5mm



Pilar
Provisório



40703CA	40703SA	H0.8mm
40703CB	40703SB	H1.5mm
40703CC	40703SC	H2.5mm
400703CD	400703SD	H3.5mm
400703CE	400703SE	H4.5mm



Ucla Base
Metálica



70703CA	70703SA	H0.8mm
70703CB	70703SB	H1.5mm
70703CC	70703SC	H2.5mm
70703CD	70703SD	H3.5mm
70703CE	70703SE	H4.5mm



Mini pilar
Cônico



800703A	H0.8mm	800703D	H3.5mm
800703B	H1.5mm	800703E	H4.5mm
800703C	H2.5mm	800703F	H5.5mm



Mini Pilar - Âng. 17°



Mini Pilar - Âng. 30°

80703BG	H1.5mm	80703BH	H1.5mm
80703CG	H2.5mm	80703CH	H2.5mm
80703DG	H3.5mm	80703DH	H3.5mm



Pilar
O'Ring



900703A	H0.8mm
900703B	H1.5mm
900703C	H2.5mm
900703D	H3.5mm
900703E	H4.5mm
900703F	H5.5mm



Parafuso
de Fixação

○ M1.8HND



Pilar GT



*Componentes Sobre o Pilar GT Pág.35

801007A	H0.8mm
801007B	H1.5mm
801007C	H2.5mm
801007D	H3.5mm
801007E	H4.5mm
801007F	H5.5mm



Pilar
Universal



*Componentes Sobre o
Pilar Universal Pág.35

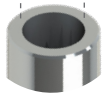
50708DA	Ø3.3 x 4mm - H0.8mm	50709DA	Ø4.5 x 4mm - H0.8mm	50708FA	Ø3.3 x 6mm - H0.8mm	50709FA	Ø4.5 x 6mm - H0.8mm
50708DB	Ø3.3 x 4mm - H1.5mm	50709DB	Ø4.5 x 4mm - H1.5mm	50708FB	Ø3.3 x 6mm - H1.5mm	50709FB	Ø4.5 x 6mm - H1.5mm
50708DC	Ø3.3 x 4mm - H2.5mm	50709DC	Ø4.5 x 4mm - H2.5mm	50708FC	Ø3.3 x 6mm - H2.5mm	50709FC	Ø4.5 x 6mm - H2.5mm
50708DD	Ø3.3 x 4mm - H3.5mm	50709DD	Ø4.5 x 4mm - H3.5mm	50708FD	Ø3.3 x 6mm - H3.5mm	50709FD	Ø4.5 x 6mm - H3.5mm
50708DE	Ø3.3 x 4mm - H4.5mm	50709DE	Ø4.5 x 4mm - H4.5mm	50708FE	Ø3.3 x 6mm - H4.5mm	50709FE	Ø4.5 x 6mm - H4.5mm
50708DF	Ø3.3 x 4mm - H5.5mm	50709DF	Ø4.5 x 4mm - H5.5mm	50708FF	Ø3.3 x 6mm - H5.5mm	50709FF	Ø4.5 x 6mm - H5.5mm



Análogo
100714



Ø2.5mm



Rosca M1.8
Ângulação Interna de 11.5°



Transfer
mold. Aberta
200714A



Transfer
mold. Fechada
200714B



Cicatrizador

Ø3.3

Ø4.5

300703A	H0.8mm	300704A	H0.8mm
300703B	H1.5mm	300704B	H1.5mm
300703C	H2.5mm	300704C	H2.5mm
300703D	H3.5mm	300704D	H3.5mm
300703E	H4.5mm	300704E	H4.5mm
300703F	H5.5mm	300704F	H5.5mm



Pilar
Provisório



40714CA	40714SA	H0.8mm
40714CB	40714SB	H1.5mm
40714CC	40714SC	H2.5mm



Ucla Base
Metálica



70714CA	70714SA	H0.8mm
70714CB	70714SB	H1.5mm
70714CC	70714SC	H2.5mm



Mini Pilar
Cônico



800703A	H0.8mm
800703B	H1.5mm
800703C	H2.5mm
800703D	H3.5mm
800703E	H4.5mm
800703F	H5.5mm



Mini Pilar - Âng. 17°

80714BG	H1.5mm
80714CG	H2.5mm
80714DG	H3.5mm



Mini Pilar - Âng. 30°

80714BH	H1.5mm
80714CH	H2.5mm
80714DH	H3.5mm



Pilar
O'Ring



900703A	H0.8mm
900703B	H1.5mm
900703C	H2.5mm
900703D	H3.5mm
900703E	H4.5mm
900703F	H5.5mm



Parafuso
de Fixação

○ M18HSU



Pilar GT



*Componentes Sobre o Pilar GT Pág.35

801007A	H0.8mm
801007B	H1.5mm
801007C	H2.5mm
801007D	H3.5mm
801007E	H4.5mm
801007F	H5.5mm



Pilar
Universal



*Componentes Sobre o
Pilar Universal Pág.35

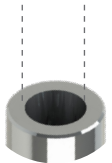
50708DA	Ø3.3 x 4mm - H0.8mm	50709DA	Ø4.5 x 4mm - H0.8mm	50708FA	Ø3.3 x 6mm - H0.8mm	50709FA	Ø4.5 x 6mm - H0.8mm
50708DB	Ø3.3 x 4mm - H1.5mm	50709DB	Ø4.5 x 4mm - H1.5mm	50708FB	Ø3.3 x 6mm - H1.5mm	50709FB	Ø4.5 x 6mm - H1.5mm
50708DC	Ø3.3 x 4mm - H2.5mm	50709DC	Ø4.5 x 4mm - H2.5mm	50708FC	Ø3.3 x 6mm - H2.5mm	50709FC	Ø4.5 x 6mm - H2.5mm
50708DD	Ø3.3 x 4mm - H3.5mm	50709DD	Ø4.5 x 4mm - H3.5mm	50708FD	Ø3.3 x 6mm - H3.5mm	50709FD	Ø4.5 x 6mm - H3.5mm
50708DE	Ø3.3 x 4mm - H4.5mm	50709DE	Ø4.5 x 4mm - H4.5mm	50708FE	Ø3.3 x 6mm - H4.5mm	50709FE	Ø4.5 x 6mm - H4.5mm
50708DF	Ø3.3 x 4mm - H5.5mm	50709DF	Ø4.5 x 4mm - H5.5mm	50708FF	Ø3.3 x 6mm - H5.5mm	50709FF	Ø4.5 x 6mm - H5.5mm



Análogo
100703



Ø2.5 mm



- Rosca M1.8
- Ângulação Interna de 11.5°



Transfer
mold. Aberta
200703A



Transfer
mold. Fechada
200703B



Cicatrizador
Tampa
301703



Cicatrizador

Ø3.3		Ø4.5	
300703A	H0.8mm	300704A	H0.8mm
300703B	H1.5mm	300704B	H1.5mm
300703C	H2.5mm	300704C	H2.5mm
300703D	H3.5mm	300704D	H3.5mm
300703E	H4.5mm	300704E	H4.5mm
300703F	H5.5mm	300704F	H5.5mm



Pilar
Provisório



40703CA	40703SA	H0.8mm
40703CB	40703SB	H1.5mm
40703CC	40703SC	H2.5mm
400703CD	400703SD	H3.5mm
400703CE	400703SE	H4.5mm



Ucla Base
Metálica



70703CA	70703SA	H0.8mm
70703CB	70703SB	H1.5mm
70703CC	70703SC	H2.5mm
70703CD	70703SD	H3.5mm
70703CE	70703SE	H4.5mm



Mini pilar
Cônico



800703A	H0.8mm	800703D	H3.5mm
800703B	H1.5mm	800703E	H4.5mm
800703C	H2.5mm	800703F	H5.5mm



Mini Pilar - Âng. 17°



Mini Pilar - Âng. 30°

80703BG	H1.5mm	80703BH	H1.5mm
80703CG	H2.5mm	80703CH	H2.5mm
80703DG	H3.5mm	80703DH	H3.5mm



Pilar
O'Ring



900703A	H0.8mm
900703B	H1.5mm
900703C	H2.5mm
900703D	H3.5mm
900703E	H4.5mm
900703F	H5.5mm



Parafuso
de Fixação

○ M18HND



Pilar GT



*Componentes Sobre o Pilar GT Pág.35

801007A	H0.8mm
801007B	H1.5mm
801007C	H2.5mm
801007D	H3.5mm
801007E	H4.5mm
801007F	H5.5mm



Pilar
Universal



*Componentes Sobre o
Pilar Universal Pág.35

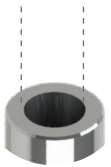
50708DA	Ø3.3 x 4mm - H0.8mm	50709DA	Ø4.5 x 4mm - H0.8mm	50708FA	Ø3.3 x 6mm - H0.8mm	50709FA	Ø4.5 x 6mm - H0.8mm
50708DB	Ø3.3 x 4mm - H1.5mm	50709DB	Ø4.5 x 4mm - H1.5mm	50708FB	Ø3.3 x 6mm - H1.5mm	50709FB	Ø4.5 x 6mm - H1.5mm
50708DC	Ø3.3 x 4mm - H2.5mm	50709DC	Ø4.5 x 4mm - H2.5mm	50708FC	Ø3.3 x 6mm - H2.5mm	50709FC	Ø4.5 x 6mm - H2.5mm
50708DD	Ø3.3 x 4mm - H3.5mm	50709DD	Ø4.5 x 4mm - H3.5mm	50708FD	Ø3.3 x 6mm - H3.5mm	50709FD	Ø4.5 x 6mm - H3.5mm
50708DE	Ø3.3 x 4mm - H4.5mm	50709DE	Ø4.5 x 4mm - H4.5mm	50708FE	Ø3.3 x 6mm - H4.5mm	50709FE	Ø4.5 x 6mm - H4.5mm
50708DF	Ø3.3 x 4mm - H5.5mm	50709DF	Ø4.5 x 4mm - H5.5mm	50708FF	Ø3.3 x 6mm - H5.5mm	50709FF	Ø4.5 x 6mm - H5.5mm



Análogo
100703



Ø2.5 mm



- Rosca M1.8
- Ângulação Interna de 11.5°



Transfer
mold. Aberta
200703A



Transfer
mold. Fechada
200703B



Cicatrizador
Tampa
301703



Cicatrizador

Ø3.3		Ø4.5	
300703A	H0.8mm	300704A	H0.8mm
300703B	H1.5mm	300704B	H1.5mm
300703C	H2.5mm	300704C	H2.5mm
300703D	H3.5mm	300704D	H3.5mm
300703E	H4.5mm	300704E	H4.5mm
300703F	H5.5mm	300704F	H5.5mm



Pilar
Provisório



40703CA	40703SA	H0.8mm
40703CB	40703SB	H1.5mm
40703CC	40703SC	H2.5mm
400703CD	400703SD	H3.5mm
400703CE	400703SE	H4.5mm



Ucla Base
Metálica



70703CA	70703SA	H0.8mm
70703CB	70703SB	H1.5mm
70703CC	70703SC	H2.5mm
70703CD	70703SD	H3.5mm
70703CE	70703SE	H4.5mm



Mini pilar
Cônico



800703A	H0.8mm	800703D	H3.5mm
800703B	H1.5mm	800703E	H4.5mm
800703C	H2.5mm	800703F	H5.5mm



Mini Pilar - Âng. 17°



Mini Pilar - Âng. 30°

80703BG	H1.5mm	80703BH	H1.5mm
80703CG	H2.5mm	80703CH	H2.5mm
80703DG	H3.5mm	80703DH	H3.5mm



Pilar
O'Ring



900703A	H0.8mm
900703B	H1.5mm
900703C	H2.5mm
900703D	H3.5mm
900703E	H4.5mm
900703F	H5.5mm



Parafuso
de Fixação

○ M18HND



Pilar GT



*Componentes Sobre o Pilar GT Pá0g.35

801007A	H0.8mm
801007B	H1.5mm
801007C	H2.5mm
801007D	H3.5mm
801007E	H4.5mm
801007F	H5.5mm



Pilar
Universal



*Componentes Sobre o
Pilar Universal Pá.35

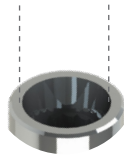
50708DA	Ø3.3 x 4mm - H0.8mm	50709DA	Ø4.5 x 4mm - H0.8mm	50708FA	Ø3.3 x 6mm - H0.8mm	50709FA	Ø4.5 x 6mm - H0.8mm
50708DB	Ø3.3 x 4mm - H1.5mm	50709DB	Ø4.5 x 4mm - H1.5mm	50708FB	Ø3.3 x 6mm - H1.5mm	50709FB	Ø4.5 x 6mm - H1.5mm
50708DC	Ø3.3 x 4mm - H2.5mm	50709DC	Ø4.5 x 4mm - H2.5mm	50708FC	Ø3.3 x 6mm - H2.5mm	50709FC	Ø4.5 x 6mm - H2.5mm
50708DD	Ø3.3 x 4mm - H3.5mm	50709DD	Ø4.5 x 4mm - H3.5mm	50708FD	Ø3.3 x 6mm - H3.5mm	50709FD	Ø4.5 x 6mm - H3.5mm
50708DE	Ø3.3 x 4mm - H4.5mm	50709DE	Ø4.5 x 4mm - H4.5mm	50708FE	Ø3.3 x 6mm - H4.5mm	50709FE	Ø4.5 x 6mm - H4.5mm
50708DF	Ø3.3 x 4mm - H5.5mm	50709DF	Ø4.5 x 4mm - H5.5mm	50708FF	Ø3.3 x 6mm - H5.5mm	50709FF	Ø4.5 x 6mm - H5.5mm



Análogo
100720



Ø3.0mm



Rosca M1.6
Ângulação de Interna de 16°



Transfer
mold. Aberta
200720A



Transfer
mold. Fechada
200720B



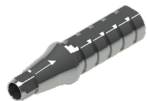
Cicatrizador

Ø3.3	
300720A	H0.8mm
300720B	H1.5mm
300720C	H2.5mm
300720D	H3.5mm
300720E	H4.5mm
300720F	H5.5mm



Cicatrizador

Ø4.5	
300721A	H0.8mm
300721B	H1.5mm
300721C	H2.5mm
300721D	H3.5mm
300721E	H4.5mm
300721F	H5.5mm



Pilar
Provisório

40720CA	40720SA	H0.8mm
40720CB	40720SB	H1.5 mm
40720CC	40720SC	H2.5mm
40720CD	40720SD	H3.5mm



Pilar
Definitivo

500720A	H0.8mm
500720B	H1.5mm
500720C	H2.5mm
500720D	H3.5mm
500720E	H4.5mm
500720F	H5.5mm



Ucla Base
Metálica

700720C	700720S	H0.8mm
700720CB	700720SB	H1.5 mm
700720CC	700720SC	H2.5mm
700720CD	700720SD	H3.5mm



Mini Pilar
Cônico



800720A	H0.8mm
800720B	H1.5mm
800720C	H2.5mm
800720D	H3.5mm
800720E	H4.5mm
800720F	H5.5mm



Mini Pilar - Âng. 17°

80720BG	H1.5mm
80720CG	H2.5mm
80720DG	H3.5mm



Mini Pilar - Âng. 30°

80720BH	H1.5mm
80720CH	H2.5mm
80720DH	H3.5mm



Parafuso
de Fixação

M16HCAC



Pilar
Universal



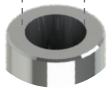
*Componentes Sobre o
Pilar Universal Pág.35

5070IDA	Ø3.3 x 4mm - H0.8mm	5070IFA	Ø3.3 x 6mm - H0.8mm	50702DA	Ø4.5 x 4mm - H0.8mm	50702FA	Ø4.5 x 6mm - H0.8mm
5070IDB	Ø3.3 x 4mm - H1.5mm	5070IFB	Ø3.3 x 6mm - H1.5mm	50702DB	Ø4.5 x 4mm - H1.5mm	50702FB	Ø4.5 x 6mm - H1.5mm
5070IDC	Ø3.3 x 4mm - H2.5mm	5070IFC	Ø3.3 x 6mm - H2.5mm	50702DC	Ø4.5 x 4mm - H2.5mm	50702FC	Ø4.5 x 6mm - H2.5mm
5070IDD	Ø3.3 x 4mm - H3.5mm	5070IFD	Ø3.3 x 6mm - H3.5mm	50702DD	Ø4.5 x 4mm - H3.5mm	50702FD	Ø4.5 x 6mm - H3.5mm
5070IDE	Ø3.3 x 4mm - H4.5mm	5070IFE	Ø3.3 x 6mm - H4.5mm	50702DE	Ø4.5 x 4mm - H4.5mm	50702FE	Ø4.5 x 6mm - H4.5mm
5070IDF	Ø3.3 x 4mm - H5.5mm	5070IFF	Ø3.3 x 6mm - H5.5mm	50702DF	Ø4.5 x 4mm - H5.5mm	50702FF	Ø4.5 x 6mm - H5.5mm

Análogo
100703



Ø2.5mm



- Rosca M1.8
- Ângulação Interna de 11.5°



Transfer
mold. Aberta
200703A



Transfer
mold. Fechada
200703B



Cicatrizador
Tampa
301703



Cicatrizador

Ø3.3		Ø4.5	
300703A	H0.8mm	300704A	H0.8mm
300703B	H1.5mm	300704B	H1.5mm
300703C	H2.5mm	300704C	H2.5mm
300703D	H3.5mm	300704D	H3.5mm
300703E	H4.5mm	300704E	H4.5mm
300703F	H5.5mm	300704F	H5.5mm



Pilar
Provisório



40703CA	40703SA	H0.8mm
40703CB	40703SB	H1.5mm
40703CC	40703SC	H2.5mm
400703CD	400703SD	H3.5mm
400703CE	400703SE	H4.5mm



Ucla Base
Metálica



70703CA	70703SA	H0.8mm
70703CB	70703SB	H1.5mm
70703CC	70703SC	H2.5mm
70703CD	70703SD	H3.5mm
70703CE	70703SE	H4.5mm



Mini pilar
Cônico



800703A	H0.8mm	800703D	H3.5mm
800703B	H1.5mm	800703E	H4.5mm
800703C	H2.5mm	800703F	H5.5mm



Mini Pilar - Âng. 17°



Mini Pilar - Âng. 30°

80703BG	H1.5mm	80703BH	H1.5mm
80703CG	H2.5mm	80703CH	H2.5mm
80703DG	H3.5mm	80703DH	H3.5mm



Pilar
O'Ring



900703A	H0.8mm
900703B	H1.5mm
900703C	H2.5mm
900703D	H3.5mm
900703E	H4.5mm
900703F	H5.5mm

Parafuso
de Fixação

○ M18HND



Pilar GT



*Componentes Sobre o Pilar GT Pág.35

801007A	H0.8mm
801007B	H1.5mm
801007C	H2.5mm
801007D	H3.5mm
801007E	H4.5mm
801007F	H5.5mm



Pilar
Universal



*Componentes Sobre o
Pilar Universal Pág.35

50708DA	Ø3.3 x 4mm - H0.8mm	50709DA	Ø4.5 x 4mm - H0.8mm	50708FA	Ø3.3 x 6mm - H0.8mm	50709FA	Ø4.5 x 6mm - H0.8mm
50708DB	Ø3.3 x 4mm - H1.5mm	50709DB	Ø4.5 x 4mm - H1.5mm	50708FB	Ø3.3 x 6mm - H1.5mm	50709FB	Ø4.5 x 6mm - H1.5mm
50708DC	Ø3.3 x 4mm - H2.5mm	50709DC	Ø4.5 x 4mm - H2.5mm	50708FC	Ø3.3 x 6mm - H2.5mm	50709FC	Ø4.5 x 6mm - H2.5mm
50708DD	Ø3.3 x 4mm - H3.5mm	50709DD	Ø4.5 x 4mm - H3.5mm	50708FD	Ø3.3 x 6mm - H3.5mm	50709FD	Ø4.5 x 6mm - H3.5mm
50708DE	Ø3.3 x 4mm - H4.5mm	50709DE	Ø4.5 x 4mm - H4.5mm	50708FE	Ø3.3 x 6mm - H4.5mm	50709FE	Ø4.5 x 6mm - H4.5mm
50708DF	Ø3.3 x 4mm - H5.5mm	50709DF	Ø4.5 x 4mm - H5.5mm	50708FF	Ø3.3 x 6mm - H5.5mm	50709FF	Ø4.5 x 6mm - H5.5mm



Análogo
 100716



Ø4.0mm



Rosca M1.6



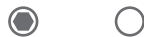
Pilar
 Provisório



400716CA	400716SA	H0.7mm
400716CB	400716SB	H1.5mm
400716CC	400716SC	H3.0mm
400716CD	400716SD	H4.5mm
400716CE	400716SE	H6.0mm



Ucla Base
 Metálica



700716CA	700716SA	H0.7mm
700716CB	700716SB	H1.5mm
700716CC	700716SC	H3.0mm
700716CD	700716SD	H4.5mm
700716CE	700716SE	H6.0mm



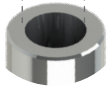
Parafuso
 de Fixação
 ○ M1.6HMD



Análogo
100703



Ø2,5mm



- Rosca M1,8
- Ângulação Interna de 11,5°



Transfer
mold. Aberta
200703A



Transfer
mold. Fechada
200703B



Cicatrizador
Tampa
301703



Cicatrizador

Ø3,3		Ø4,5	
300703A	H0.8mm	300704A	H0.8mm
300703B	H1.5mm	300704B	H1.5mm
300703C	H2.5mm	300704C	H2.5mm
300703D	H3.5mm	300704D	H3.5mm
300703E	H4.5mm	300704E	H4.5mm
300703F	H5.5mm	300704F	H5.5mm



Pilar
Provisório



40703CA	40703SA	H0.8mm
40703CB	40703SB	H1.5mm
40703CC	40703SC	H2.5mm
400703CD	400703SD	H3.5mm
400703CE	400703SE	H4.5mm



Ucla Base
Metálica

70703CA	70703SA	H0.8mm
70703CB	70703SB	H1.5mm
70703CC	70703SC	H2.5mm
70703CD	70703SD	H3.5mm
70703CE	70703SE	H4.5mm



Mini pilar
Cônico



800703A	H0.8mm	800703D	H3.5mm
800703B	H1.5mm	800703E	H4.5mm
800703C	H2.5mm	800703F	H5.5mm



Mini Pilar - Âng. 17°



Mini Pilar - Âng. 30°

80703BG	H1.5mm	80703BH	H1.5mm
80703CG	H2.5mm	80703CH	H2.5mm
80703DG	H3.5mm	80703DH	H3.5mm



Pilar
O'Ring



900703A	H0.8mm
900703B	H1.5mm
900703C	H2.5mm
900703D	H3.5mm
900703E	H4.5mm
900703F	H5.5mm



Parafuso
de Fixação

○ M18HND



Pilar GT



*Componentes Sobre o Pilar GT Pág.35

801007A	H0.8mm
801007B	H1.5mm
801007C	H2.5mm
801007D	H3.5mm
801007E	H4.5mm
801007F	H5.5mm



Pilar
Universal



*Componentes Sobre o
Pilar Universal Pág.35

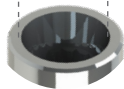
50708DA	Ø3.3 x 4mm - H0.8mm	50709DA	Ø4.5 x 4mm - H0.8mm	50708FA	Ø3.3 x 6mm - H0.8mm	50709FA	Ø4.5 x 6mm - H0.8mm
50708DB	Ø3.3 x 4mm - H1.5mm	50709DB	Ø4.5 x 4mm - H1.5mm	50708FB	Ø3.3 x 6mm - H1.5mm	50709FB	Ø4.5 x 6mm - H1.5mm
50708DC	Ø3.3 x 4mm - H2.5mm	50709DC	Ø4.5 x 4mm - H2.5mm	50708FC	Ø3.3 x 6mm - H2.5mm	50709FC	Ø4.5 x 6mm - H2.5mm
50708DD	Ø3.3 x 4mm - H3.5mm	50709DD	Ø4.5 x 4mm - H3.5mm	50708FD	Ø3.3 x 6mm - H3.5mm	50709FD	Ø4.5 x 6mm - H3.5mm
50708DE	Ø3.3 x 4mm - H4.5mm	50709DE	Ø4.5 x 4mm - H4.5mm	50708FE	Ø3.3 x 6mm - H4.5mm	50709FE	Ø4.5 x 6mm - H4.5mm
50708DF	Ø3.3 x 4mm - H5.5mm	50709DF	Ø4.5 x 4mm - H5.5mm	50708FF	Ø3.3 x 6mm - H5.5mm	50709FF	Ø4.5 x 6mm - H5.5mm



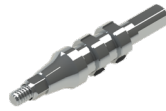
Análogo
100720



Ø3.0mm



Rosca M1.6
Ângulação de Interna de 16°



Transfer
mold. Aberta
200720A



Transfer
mold. Fechada
200720B



Cicatrizador

Ø3.3

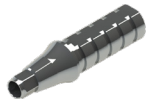
300720A	H0.8mm
300720B	H1.5mm
300720C	H2.5mm
300720D	H3.5mm
300720E	H4.5mm
300720F	H5.5mm





Cicatrizador

Ø4.5

300721A	H0.8mm
300721B	H1.5mm
300721C	H2.5mm
300721D	H3.5mm
300721E	H4.5mm
300721F	H5.5mm



Pilar
Provisório

		
40720CA	40720SA	H0.8mm
40720CB	40720SB	H1.5 mm
40720CC	40720SC	H2.5mm
40720CD	40720SD	H3.5mm





Pilar
Definitivo

500720A	H0.8mm
500720B	H1.5mm
500720C	H2.5mm
500720D	H3.5mm
500720E	H4.5mm
500720F	H5.5mm



Ucla Base
Metálica

		
700720C	700720S	H0.8mm
700720CB	700720SB	H1.5 mm
700720CC	700720SC	H2.5mm
700720CD	700720SD	H3.5mm



Mini Pilar
Cônico



800720A	H0.8mm
800720B	H1.5mm
800720C	H2.5mm
800720D	H3.5mm
800720E	H4.5mm
800720F	H5.5mm



Mini Pilar - Âng. 17°

80720BG	H1.5mm
80720CG	H2.5mm
80720DG	H3.5mm



Mini Pilar - Âng. 30°

80720BH	H1.5mm
80720CH	H2.5mm
80720DH	H3.5mm



Parafuso
de Fixação

 MI6HCAC





Pilar GM RP
(Mini Pilar Ex)

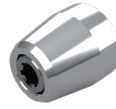


801008A	H0.8mm
801008B	H1.5mm
801008C	H2.5mm
801008D	H3.5mm
801008E	H4.5mm
801008F	H5.5mm

Ø4.8mm



Rosca M2.0

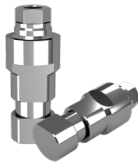


Cicatrizador
Tampa
301008



Transfer
mold. Fechada
201008B

Análogo
101008



Pilar
Provisório
401008C



Parafuso
de Fixação
M20FGMEX



Ucla Base
Metálica

701008C



Parafuso
de Fixação
M20FGMEX



Pilar
Universal

*Componentes Sobre o
Pilar Universal Pág.35



50701DA	Ø3.3 x 4mm - H0.8mm	50701FA	Ø3.3 x 6mm - H0.8mm	50702DA	Ø4.5 x 4mm - H0.8mm	50702FA	Ø4.5 x 6mm - H0.8mm
50701DB	Ø3.3 x 4mm - H1.5mm	50701FB	Ø3.3 x 6mm - H1.5mm	50702DB	Ø4.5 x 4mm - H1.5mm	50702FB	Ø4.5 x 6mm - H1.5mm
50701DC	Ø3.3 x 4mm - H2.5mm	50701FC	Ø3.3 x 6mm - H2.5mm	50702DC	Ø4.5 x 4mm - H2.5mm	50702FC	Ø4.5 x 6mm - H2.5mm
50701DD	Ø3.3 x 4mm - H3.5mm	50701FD	Ø3.3 x 6mm - H3.5mm	50702DD	Ø4.5 x 4mm - H3.5mm	50702FD	Ø4.5 x 6mm - H3.5mm
50701DE	Ø3.3 x 4mm - H4.5mm	50701FE	Ø3.3 x 6mm - H4.5mm	50702DE	Ø4.5 x 4mm - H4.5mm	50702FE	Ø4.5 x 6mm - H4.5mm
50701DF	Ø3.3 x 4mm - H5.5mm	50701FF	Ø3.3 x 6mm - H5.5mm	50702DF	Ø4.5 x 4mm - H5.5mm	50702FF	Ø4.5 x 6mm - H5.5mm



Análogo
100319



Ø3.0mm



Rosca M1.4



Transfer
mold. Aberta
200319A



Transfer
mold. Fechada
200319B



Cicatrizador
Tampa
301319

Cicatrizador	Ø3.2	
	300318B	H2mm
300318C	H3mm	
300318D	H4mm	
300318E	H5mm	
300318F	H6mm	

Cicatrizador	Ø3.8	
	300319B	H2mm
300319C	H3mm	
300319D	H4mm	
300319E	H5mm	
300319F	H6mm	



Ucla
Base Metálica

- 700319C
- 700319S



Parafuso
de Fixação

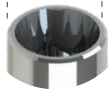
- M14UEB



Análogo
100705



Ø3.5mm



Rosca M1.6



Transfer
mold. Aberta
200705A



Transfer
mold. Fechada
200705B



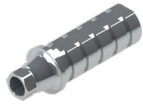
Cicatrizador

Ø3.6	
300700A	H0.8mm
300700B	H1.5mm
300700C	H2.5mm
300700D	H3.5mm
300700E	H4.5mm
300700F	H5.5mm



Cicatrizador

Ø4.5	
300705A	H0.8mm
300705B	H1.5mm
300705C	H2.5mm
300705D	H3.5mm
300705E	H4.5mm
300705F	H5.5mm



Pilar
Provisório



400705C	400705S	H1.0mm
400705CC	400705SC	H2.5mm
400705CD	400705SD	H3.5mm
400705CE	400705SE	H4.5mm

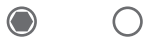


Pilar
Definitivo

500705A	H1.5mm
500705B	H2.5mm
500705C	H3.5mm
500705D	H4.5mm



Ucla Base
Metálica



700705C	700705S	H1.2mm
700705CC	700705SC	H2.5mm
700705CD	700705SD	H3.5mm
700705CE	700705SE	H4.5mm



Mini Pilar
Cônico



800705A	H0.8mm
800705B	H1.5mm
800705C	H2.5mm
800705D	H3.5mm
800705E	H4.5mm
800705F	H5.5mm



Mini Pilar - Âng. 17°

80705CG	H2.5mm
80705DG	H3.5mm



Mini Pilar - Âng. 30°

80705DH	H3.5mm
80705EH	H4.5mm



Parafuso
de Fixação

○ M16HEB



Análogo

100321



Ø4.3mm



Rosca M2.0



Transfer mold. Aberta

200321A



Transfer mold. Fechada

200321B



Cicatrizador Tampa

301321

Ø3.6



Cicatrizador

300321B	H2mm
300321C	H3mm
300321D	H4mm
300321E	H5mm
300321F	H6mm

Ø5.0



Cicatrizador

300322B	H2mm
300322C	H3mm
300322D	H4mm
300322E	H5mm
300322F	H6mm



Pilar Provisório



40321CA	40321SA	H0.8mm
40321CB	40321SB	H1.5 mm
40321CC	40321SC	H2.5mm
40321CD	40321SD	H3.5mm



Pilar Definitivo

500321A	H0.8mm
500321B	H1.5mm
500321C	H2.5mm
500321D	H3.5mm



Ucla Base Metálica



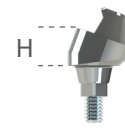
700321C	700321S	H1mm
700321CB	700321SC	H1.5mm
700321CC	700321SC	H2.5mm
700321CD	700321SD	H3.5mm



Mini Pilar Cônico



800321A	H0.8mm
800321B	H1.5mm
800321C	H2.5mm
800321D	H3.5mm
800321E	H4.5mm
800321F	H5.5mm



Mini Pilar - Âng. 17°

80321CG	H2.5mm
80321DG	H3.5mm



Mini Pilar - Âng. 30°

80321DH	H3.5mm
80321EH	H4.5mm



Parafuso de Fixação

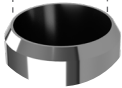
○ M20HEB



Análogo
100702



Ø4.5mm



Rosca M2.0



Transfer
mold. Aberta
200702A



Transfer
mold. Fechada
200702B

Cicatrizador



300702B	H2mm
300702C	H3mm
300702D	H4mm
300702E	H5mm
300702F	H6mm



Pilar
Provisório



400702C

400702S

H1mm



Ucla Base
Metálica



700702C

700702S

H1mm



Mini pilar
Cônico



800702A	H1mm
800702B	H2mm
800702C	H3mm
800702D	H4mm
800702E	H5mm
800702F	H6mm



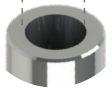
Parafuso
de Fixação
M20HAT



Análogo
100703



Ø2.5mm



- Rosca M1.8
- Ângulação Interna de 11.5°



Transfer
mold. Aberta
200703A



Transfer
mold. Fechada
200703B



Cicatrizador
Tampa
301703

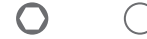


Cicatrizador

Ø3.3		Ø4.5	
300703A	H0.8mm	300704A	H0.8mm
300703B	H1.5mm	300704B	H1.5mm
300703C	H2.5mm	300704C	H2.5mm
300703D	H3.5mm	300704D	H3.5mm
300703E	H4.5mm	300704E	H4.5mm
300703F	H5.5mm	300704F	H5.5mm



Pilar
Provisório



40703CA	40703SA	H0.8mm
40703CB	40703SB	H1.5mm
40703CC	40703SC	H2.5mm
400703CD	400703SD	H3.5mm
400703CE	400703SE	H4.5mm



Ucla Base
Metálica

70703CA	70703SA	H0.8mm
70703CB	70703SB	H1.5mm
70703CC	70703SC	H2.5mm
70703CD	70703SD	H3.5mm
70703CE	70703SE	H4.5mm



Mini pilar
Cônico



800703A	H0.8mm	800703D	H3.5mm
800703B	H1.5mm	800703E	H4.5mm
800703C	H2.5mm	800703F	H5.5mm



Mini Pilar - Âng. 17°



Mini Pilar - Âng. 30°

80703BG	H1.5mm	80703BH	H1.5mm
80703CG	H2.5mm	80703CH	H2.5mm
80703DG	H3.5mm	80703DH	H3.5mm



Pilar
O'Ring



900703A	H0.8mm
900703B	H1.5mm
900703C	H2.5mm
900703D	H3.5mm
900703E	H4.5mm
900703F	H5.5mm



Parafuso
de Fixação

○ M18HND



Pilar GT



*Componentes Sobre o Pilar GT Pág.35

801007A	H0.8mm
801007B	H1.5mm
801007C	H2.5mm
801007D	H3.5mm
801007E	H4.5mm
801007F	H5.5mm



Pilar
Universal



*Componentes Sobre o
Pilar Universal Pág.35

50708DA	Ø3.3 x 4mm - H0.8mm	50709DA	Ø4.5 x 4mm - H0.8mm	50708FA	Ø3.3 x 6mm - H0.8mm	50709FA	Ø4.5 x 6mm - H0.8mm
50708DB	Ø3.3 x 4mm - H1.5mm	50709DB	Ø4.5 x 4mm - H1.5mm	50708FB	Ø3.3 x 6mm - H1.5mm	50709FB	Ø4.5 x 6mm - H1.5mm
50708DC	Ø3.3 x 4mm - H2.5mm	50709DC	Ø4.5 x 4mm - H2.5mm	50708FC	Ø3.3 x 6mm - H2.5mm	50709FC	Ø4.5 x 6mm - H2.5mm
50708DD	Ø3.3 x 4mm - H3.5mm	50709DD	Ø4.5 x 4mm - H3.5mm	50708FD	Ø3.3 x 6mm - H3.5mm	50709FD	Ø4.5 x 6mm - H3.5mm
50708DE	Ø3.3 x 4mm - H4.5mm	50709DE	Ø4.5 x 4mm - H4.5mm	50708FE	Ø3.3 x 6mm - H4.5mm	50709FE	Ø4.5 x 6mm - H4.5mm
50708DF	Ø3.3 x 4mm - H5.5mm	50709DF	Ø4.5 x 4mm - H5.5mm	50708FF	Ø3.3 x 6mm - H5.5mm	50709FF	Ø4.5 x 6mm - H5.5mm



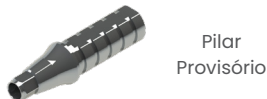
Análogo
100720



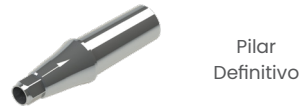
Ø3.3	
300720A	H0.8mm
300720B	H1.5mm
300720C	H2.5mm
300720D	H3.5mm
300720E	H4.5mm
300720F	H5.5mm



Ø4.5	
300721A	H0.8mm
300721B	H1.5mm
300721C	H2.5mm
300721D	H3.5mm
300721E	H4.5mm
300721F	H5.5mm



40720CA	40720SA	H0.8mm
40720CB	40720SB	H1.5 mm
40720CC	40720SC	H2.5mm
40720CD	40720SD	H3.5mm



500720A	H0.8mm
500720B	H1.5mm
500720C	H2.5mm
500720D	H3.5mm
500720E	H4.5mm
500720F	H5.5mm



700720C	700720S	H0.8mm
700720CB	700720SB	H1.5 mm
700720CC	700720SC	H2.5mm
700720CD	700720SD	H3.5mm



800720A	H0.8mm
800720B	H1.5mm
800720C	H2.5mm
800720D	H3.5mm
800720E	H4.5mm
800720F	H5.5mm



80720BG	H1.5mm
80720CG	H2.5mm
80720DG	H3.5mm



80720BH	H1.5mm
80720CH	H2.5mm
80720DH	H3.5mm



M16HCAC



*Componentes Sobre o Pilar Universal Pág.35

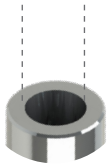
50701DA	Ø3.3 x 4mm - H0.8mm	50701FA	Ø3.3 x 6mm - H0.8mm	50702DA	Ø4.5 x 4mm - H0.8mm	50702FA	Ø4.5 x 6mm - H0.8mm
50701DB	Ø3.3 x 4mm - H1.5mm	50701FB	Ø3.3 x 6mm - H1.5mm	50702DB	Ø4.5 x 4mm - H1.5mm	50702FB	Ø4.5 x 6mm - H1.5mm
50701DC	Ø3.3 x 4mm - H2.5mm	50701FC	Ø3.3 x 6mm - H2.5mm	50702DC	Ø4.5 x 4mm - H2.5mm	50702FC	Ø4.5 x 6mm - H2.5mm
50701DD	Ø3.3 x 4mm - H3.5mm	50701FD	Ø3.3 x 6mm - H3.5mm	50702DD	Ø4.5 x 4mm - H3.5mm	50702FD	Ø4.5 x 6mm - H3.5mm
50701DE	Ø3.3 x 4mm - H4.5mm	50701FE	Ø3.3 x 6mm - H4.5mm	50702DE	Ø4.5 x 4mm - H4.5mm	50702FE	Ø4.5 x 6mm - H4.5mm
50701DF	Ø3.3 x 4mm - H5.5mm	50701FF	Ø3.3 x 6mm - H5.5mm	50702DF	Ø4.5 x 4mm - H5.5mm	50702FF	Ø4.5 x 6mm - H5.5mm



Análogo
100703



Ø2.5mm



- Rosca M1.8
- Ângulação Interna de 11.5°



Transfer
mold. Aberta
200703A



Transfer
mold. Fechada
200703B



Cicatrizador
Tampa
301703



Cicatrizador

Ø3.3		Ø4.5	
300703A	H0.8mm	300704A	H0.8mm
300703B	H1.5mm	300704B	H1.5mm
300703C	H2.5mm	300704C	H2.5mm
300703D	H3.5mm	300704D	H3.5mm
300703E	H4.5mm	300704E	H4.5mm
300703F	H5.5mm	300704F	H5.5mm



Pilar
Provisório



40703CA	40703SA	H0.8mm
40703CB	40703SB	H1.5mm
40703CC	40703SC	H2.5mm
400703CD	400703SD	H3.5mm
400703CE	400703SE	H4.5mm



Ucla Base
Metálica



70703CA	70703SA	H0.8mm
70703CB	70703SB	H1.5mm
70703CC	70703SC	H2.5mm
70703CD	70703SD	H3.5mm
70703CE	70703SE	H4.5mm



Mini pilar
Cônico



800703A	H0.8mm	800703D	H3.5mm
800703B	H1.5mm	800703E	H4.5mm
800703C	H2.5mm	800703F	H5.5mm



Mini Pilar - Âng. 17°



Mini Pilar - Âng. 30°

80703BG	H1.5mm	80703BH	H1.5mm
80703CG	H2.5mm	80703CH	H2.5mm
80703DG	H3.5mm	80703DH	H3.5mm



Pilar
O'Ring



900703A	H0.8mm
900703B	H1.5mm
900703C	H2.5mm
900703D	H3.5mm
900703E	H4.5mm
900703F	H5.5mm



Parafuso
de Fixação

○ M18HND



Pilar GT



*Componentes Sobre o Pilar GT Pág.35

801007A	H0.8mm
801007B	H1.5mm
801007C	H2.5mm
801007D	H3.5mm
801007E	H4.5mm
801007F	H5.5mm



Pilar
Universal



*Componentes Sobre o
Pilar Universal Pág.35

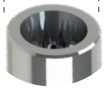
50708DA	Ø3.3 x 4mm - H0.8mm	50709DA	Ø4.5 x 4mm - H0.8mm	50708FA	Ø3.3 x 6mm - H0.8mm	50709FA	Ø4.5 x 6mm - H0.8mm
50708DB	Ø3.3 x 4mm - H1.5mm	50709DB	Ø4.5 x 4mm - H1.5mm	50708FB	Ø3.3 x 6mm - H1.5mm	50709FB	Ø4.5 x 6mm - H1.5mm
50708DC	Ø3.3 x 4mm - H2.5mm	50709DC	Ø4.5 x 4mm - H2.5mm	50708FC	Ø3.3 x 6mm - H2.5mm	50709FC	Ø4.5 x 6mm - H2.5mm
50708DD	Ø3.3 x 4mm - H3.5mm	50709DD	Ø4.5 x 4mm - H3.5mm	50708FD	Ø3.3 x 6mm - H3.5mm	50709FD	Ø4.5 x 6mm - H3.5mm
50708DE	Ø3.3 x 4mm - H4.5mm	50709DE	Ø4.5 x 4mm - H4.5mm	50708FE	Ø3.3 x 6mm - H4.5mm	50709FE	Ø4.5 x 6mm - H4.5mm
50708DF	Ø3.3 x 4mm - H5.5mm	50709DF	Ø4.5 x 4mm - H5.5mm	50708FF	Ø3.3 x 6mm - H5.5mm	50709FF	Ø4.5 x 6mm - H5.5mm



Análogo
100701



Ø3.5 / 4.0mm



Rosca M1.6



Transfer mold. Aberta
200701A



Transfer mold. Fechada
200701B



Cicatrizador

300701B	H2mm
300701C	H3mm
300701D	H4mm
300701E	H5mm
300701F	H6mm



Pilar Provisório



400701C	400701S	H1mm
400701CB	400701SB	H2mm
400701CC	400701SC	H3mm
400701CD	400701SD	H4mm



Pilar Definitivo

500701A	H1mm
500701B	H2mm
500701C	H3mm
500701D	H4mm



Ucla Base Metálica



700701C	700701S	H1mm
700701CB	700701SB	H2mm
700701CC	700701SC	H3mm
700701CD	700701SD	H4mm



Mini pilar Cônico



800701A	H1mm
800701B	H2mm
800701C	H3mm
800701D	H4mm
800701E	H5mm
800701F	H6mm



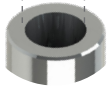
Parafuso de Fixação
MI6HAT



Análogo
100703



Ø2.5mm



- Rosca M1.8
- Ângulação Interna de 11.5°



Transfer
mold. Aberta
200703A



Transfer
mold. Fechada
200703B



Cicatrizador
Tampa
301703



Cicatrizador

Ø3.3		Ø4.5	
300703A	H0.8mm	300704A	H0.8mm
300703B	H1.5mm	300704B	H1.5mm
300703C	H2.5mm	300704C	H2.5mm
300703D	H3.5mm	300704D	H3.5mm
300703E	H4.5mm	300704E	H4.5mm
300703F	H5.5mm	300704F	H5.5mm



Pilar
Provisório



40703CA	40703SA	H0.8mm
40703CB	40703SB	H1.5mm
40703CC	40703SC	H2.5mm
400703CD	400703SD	H3.5mm
400703CE	400703SE	H4.5mm



Ucla Base
Metálica

70703CA	70703SA	H0.8mm
70703CB	70703SB	H1.5mm
70703CC	70703SC	H2.5mm
70703CD	70703SD	H3.5mm
70703CE	70703SE	H4.5mm



Mini pilar
Cônico



800703A	H0.8mm	800703D	H3.5mm
800703B	H1.5mm	800703E	H4.5mm
800703C	H2.5mm	800703F	H5.5mm



Mini Pilar - Âng. 17°



Mini Pilar - Âng. 30°

80703BG	H1.5mm	80703BH	H1.5mm
80703CG	H2.5mm	80703CH	H2.5mm
80703DG	H3.5mm	80703DH	H3.5mm



Pilar
O'Ring



900703A	H0.8mm
900703B	H1.5mm
900703C	H2.5mm
900703D	H3.5mm
900703E	H4.5mm
900703F	H5.5mm



Parafuso
de Fixação

○ M18HND



Pilar GT



*Componentes Sobre o Pilar GT Pág.35

801007A	H0.8mm
801007B	H1.5mm
801007C	H2.5mm
801007D	H3.5mm
801007E	H4.5mm
801007F	H5.5mm



Pilar
Universal



*Componentes Sobre o
Pilar Universal Pág.35

50708DA	Ø3.3 x 4mm - H0.8mm	50709DA	Ø4.5 x 4mm - H0.8mm	50708FA	Ø3.3 x 6mm - H0.8mm	50709FA	Ø4.5 x 6mm - H0.8mm
50708DB	Ø3.3 x 4mm - H1.5mm	50709DB	Ø4.5 x 4mm - H1.5mm	50708FB	Ø3.3 x 6mm - H1.5mm	50709FB	Ø4.5 x 6mm - H1.5mm
50708DC	Ø3.3 x 4mm - H2.5mm	50709DC	Ø4.5 x 4mm - H2.5mm	50708FC	Ø3.3 x 6mm - H2.5mm	50709FC	Ø4.5 x 6mm - H2.5mm
50708DD	Ø3.3 x 4mm - H3.5mm	50709DD	Ø4.5 x 4mm - H3.5mm	50708FD	Ø3.3 x 6mm - H3.5mm	50709FD	Ø4.5 x 6mm - H3.5mm
50708DE	Ø3.3 x 4mm - H4.5mm	50709DE	Ø4.5 x 4mm - H4.5mm	50708FE	Ø3.3 x 6mm - H4.5mm	50709FE	Ø4.5 x 6mm - H4.5mm
50708DF	Ø3.3 x 4mm - H5.5mm	50709DF	Ø4.5 x 4mm - H5.5mm	50708FF	Ø3.3 x 6mm - H5.5mm	50709FF	Ø4.5 x 6mm - H5.5mm

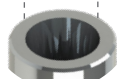


Análogo

100712



Ø2.72mm



Rosca M1.6

Ângulação Interna de 16°



Transfer
mold. Aberta

200712A



Transfer
mold. Fechada

200712B



Cicatrizador

Ø3.5

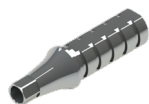
300712B	H2mm
300712C	H3mm
300712D	H4mm
300712E	H5mm
300712F	H6mm



Cicatrizador

Ø4.5

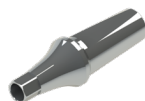
300713B	H2mm
300713C	H3mm
300713D	H4mm
300713E	H5mm
300713F	H6mm



Pilar
Provisório



400712C	400712S	H1mm
40712CB	40712SB	H2mm
40712CC	40712SC	H3mm
40712CD	40712SD	H4mm



Pilar
Definitivo

500712A	H1mm
500712B	H2mm
500712C	H3mm
500712D	H4mm
500712E	H5mm
500712F	H6mm



Ucla Base
Metálica



700712C	700712S	H1mm
70712CB	70712SB	H2mm
70712CC	70712SC	H3mm
70712CD	70712SD	H4mm



Mini Pilar
Cônico



800712A	H1mm
800712B	H2mm
800712C	H3mm
800712D	H4mm
800712E	H5mm
800712F	H6mm



Mini Pilar - Âng. 17°

80712BG	H2mm
80712CG	H3mm
80712DG	H4mm



Mini Pilar - Âng. 30°

80712BH	H2mm
80712CH	H3mm
80712DH	H4mm



Pilar
O'Ring



900712A	H1mm
900712B	H2mm
900712C	H3mm
900712D	H4mm
900712E	H5mm
900712F	H6mm



Parafuso
de Fixação

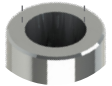
MI6HSI



Análogo
100703



Ø2.5mm



- Rosca M1.8
- Ângulação Interna de 11.5°



Transfer
mold. Aberta
200703A



Transfer
mold. Fechada
200703B



Cicatrizador
Tampa
301703



Cicatrizador

Ø3.3		Ø4.5	
300703A	H0.8mm	300704A	H0.8mm
300703B	H1.5mm	300704B	H1.5mm
300703C	H2.5mm	300704C	H2.5mm
300703D	H3.5mm	300704D	H3.5mm
300703E	H4.5mm	300704E	H4.5mm
300703F	H5.5mm	300704F	H5.5mm



Pilar
Provisório

40703CA	40703SA	H0.8mm
40703CB	40703SB	H1.5mm
40703CC	40703SC	H2.5mm
400703CD	400703SD	H3.5mm
400703CE	400703SE	H4.5mm



Ucla Base
Metálica

70703CA	70703SA	H0.8mm
70703CB	70703SB	H1.5mm
70703CC	70703SC	H2.5mm
70703CD	70703SD	H3.5mm
70703CE	70703SE	H4.5mm



Mini pilar
Cônico



800703A	H0.8mm	800703D	H3.5mm
800703B	H1.5mm	800703E	H4.5mm
800703C	H2.5mm	800703F	H5.5mm



Mini Pilar - Âng. 17°



Mini Pilar - Âng. 30°

80703BG	H1.5mm	80703BH	H1.5mm
80703CG	H2.5mm	80703CH	H2.5mm
80703DG	H3.5mm	80703DH	H3.5mm



Pilar
O'Ring



900703A	H0.8mm
900703B	H1.5mm
900703C	H2.5mm
900703D	H3.5mm
900703E	H4.5mm
900703F	H5.5mm



Parafuso
de Fixação

○ M18HND



Pilar GT



*Componentes Sobre o Pilar GT Pág.35

801007A	H0.8mm
801007B	H1.5mm
801007C	H2.5mm
801007D	H3.5mm
801007E	H4.5mm
801007F	H5.5mm



Pilar
Universal



*Componentes Sobre o
Pilar Universal Pág.35

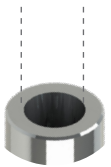
50708DA	Ø3.3 x 4mm - H0.8mm	50709DA	Ø4.5 x 4mm - H0.8mm	50708FA	Ø3.3 x 6mm - H0.8mm	50709FA	Ø4.5 x 6mm - H0.8mm
50708DB	Ø3.3 x 4mm - H1.5mm	50709DB	Ø4.5 x 4mm - H1.5mm	50708FB	Ø3.3 x 6mm - H1.5mm	50709FB	Ø4.5 x 6mm - H1.5mm
50708DC	Ø3.3 x 4mm - H2.5mm	50709DC	Ø4.5 x 4mm - H2.5mm	50708FC	Ø3.3 x 6mm - H2.5mm	50709FC	Ø4.5 x 6mm - H2.5mm
50708DD	Ø3.3 x 4mm - H3.5mm	50709DD	Ø4.5 x 4mm - H3.5mm	50708FD	Ø3.3 x 6mm - H3.5mm	50709FD	Ø4.5 x 6mm - H3.5mm
50708DE	Ø3.3 x 4mm - H4.5mm	50709DE	Ø4.5 x 4mm - H4.5mm	50708FE	Ø3.3 x 6mm - H4.5mm	50709FE	Ø4.5 x 6mm - H4.5mm
50708DF	Ø3.3 x 4mm - H5.5mm	50709DF	Ø4.5 x 4mm - H5.5mm	50708FF	Ø3.3 x 6mm - H5.5mm	50709FF	Ø4.5 x 6mm - H5.5mm



Análogo
100703



Ø2.5mm



- Rosca M1.8
- Ângulação Interna de 11.5°



Transfer
mold. Aberta
200703A



Transfer
mold. Fechada
200703B



Cicatrizador
Tampa
301703



Cicatrizador

Ø3.3		Ø4.5	
300703A	H0.8mm	300704A	H0.8mm
300703B	H1.5mm	300704B	H1.5mm
300703C	H2.5mm	300704C	H2.5mm
300703D	H3.5mm	300704D	H3.5mm
300703E	H4.5mm	300704E	H4.5mm
300703F	H5.5mm	300704F	H5.5mm



Pilar
Provisório



40703CA	40703SA	H0.8mm
40703CB	40703SB	H1.5mm
40703CC	40703SC	H2.5mm
400703CD	400703SD	H3.5mm
400703CE	400703SE	H4.5mm



Ucla Base
Metálica

70703CA	70703SA	H0.8mm
70703CB	70703SB	H1.5mm
70703CC	70703SC	H2.5mm
70703CD	70703SD	H3.5mm
70703CE	70703SE	H4.5mm



Mini pilar
Cônico



800703A	H0.8mm	800703D	H3.5mm
800703B	H1.5mm	800703E	H4.5mm
800703C	H2.5mm	800703F	H5.5mm



Mini Pilar - Âng. 17°



Mini Pilar - Âng. 30°

80703BG	H1.5mm	80703BH	H1.5mm
80703CG	H2.5mm	80703CH	H2.5mm
80703DG	H3.5mm	80703DH	H3.5mm



Pilar
O'Ring



900703A	H0.8mm
900703B	H1.5mm
900703C	H2.5mm
900703D	H3.5mm
900703E	H4.5mm
900703F	H5.5mm



Parafuso
de Fixação

○ M18HND



Pilar GT



*Componentes Sobre o Pilar GT Pág.35

801007A	H0.8mm
801007B	H1.5mm
801007C	H2.5mm
801007D	H3.5mm
801007E	H4.5mm
801007F	H5.5mm



Pilar
Universal



*Componentes Sobre o
Pilar Universal Pág.35

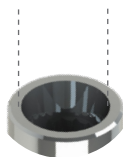
50708DA	Ø3.3 x 4mm - H0.8mm	50709DA	Ø4.5 x 4mm - H0.8mm	50708FA	Ø3.3 x 6mm - H0.8mm	50709FA	Ø4.5 x 6mm - H0.8mm
50708DB	Ø3.3 x 4mm - H1.5mm	50709DB	Ø4.5 x 4mm - H1.5mm	50708FB	Ø3.3 x 6mm - H1.5mm	50709FB	Ø4.5 x 6mm - H1.5mm
50708DC	Ø3.3 x 4mm - H2.5mm	50709DC	Ø4.5 x 4mm - H2.5mm	50708FC	Ø3.3 x 6mm - H2.5mm	50709FC	Ø4.5 x 6mm - H2.5mm
50708DD	Ø3.3 x 4mm - H3.5mm	50709DD	Ø4.5 x 4mm - H3.5mm	50708FD	Ø3.3 x 6mm - H3.5mm	50709FD	Ø4.5 x 6mm - H3.5mm
50708DE	Ø3.3 x 4mm - H4.5mm	50709DE	Ø4.5 x 4mm - H4.5mm	50708FE	Ø3.3 x 6mm - H4.5mm	50709FE	Ø4.5 x 6mm - H4.5mm
50708DF	Ø3.3 x 4mm - H5.5mm	50709DF	Ø4.5 x 4mm - H5.5mm	50708FF	Ø3.3 x 6mm - H5.5mm	50709FF	Ø4.5 x 6mm - H5.5mm



Análogo
100720



Ø3.0mm



Rosca M1.6
Ângulação de Interna de 16°



Transfer
mold. Aberta
200720A



Transfer
mold. Fechada
200720B



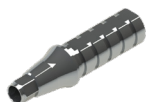
Cicatrizador

Ø3.3	
300720A	H0.8mm
300720B	H1.5mm
300720C	H2.5mm
300720D	H3.5mm
300720E	H4.5mm
300720F	H5.5mm



Cicatrizador

Ø4.5	
300721A	H0.8mm
300721B	H1.5mm
300721C	H2.5mm
300721D	H3.5mm
300721E	H4.5mm
300721F	H5.5mm



Pilar
Provisório

Ø3.0mm		
40720CA	40720SA	H0.8mm
40720CB	40720SB	H1.5 mm
40720CC	40720SC	H2.5mm
40720CD	40720SD	H3.5mm



Pilar
Definitivo

500720A	H0.8mm
500720B	H1.5mm
500720C	H2.5mm
500720D	H3.5mm
500720E	H4.5mm
500720F	H5.5mm



Ucla Base
Metálica

Ø4.5mm		
700720C	700720S	H0.8mm
700720CB	700720SB	H1.5 mm
700720CC	700720SC	H2.5mm
700720CD	700720SD	H3.5mm



Mini Pilar
Cônico



800720A	H0.8mm
800720B	H1.5mm
800720C	H2.5mm
800720D	H3.5mm
800720E	H4.5mm
800720F	H5.5mm



Mini Pilar - Âng. 17°

80720BG	H1.5mm
80720CG	H2.5mm
80720DG	H3.5mm



Mini Pilar - Âng. 30°

80720BH	H1.5mm
80720CH	H2.5mm
80720DH	H3.5mm



Parafuso
de Fixação

M16HCAC



Pilar
Universal



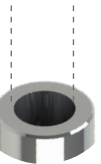
*Componentes Sobre o
Pilar Universal Pág.35

50701DA	Ø3.3 x 4mm - H0.8mm	50701FA	Ø3.3 x 6mm - H0.8mm	50702DA	Ø4.5 x 4mm - H0.8mm	50702FA	Ø4.5 x 6mm - H0.8mm
50701DB	Ø3.3 x 4mm - H1.5mm	50701FB	Ø3.3 x 6mm - H1.5mm	50702DB	Ø4.5 x 4mm - H1.5mm	50702FB	Ø4.5 x 6mm - H1.5mm
50701DC	Ø3.3 x 4mm - H2.5mm	50701FC	Ø3.3 x 6mm - H2.5mm	50702DC	Ø4.5 x 4mm - H2.5mm	50702FC	Ø4.5 x 6mm - H2.5mm
50701DD	Ø3.3 x 4mm - H3.5mm	50701FD	Ø3.3 x 6mm - H3.5mm	50702DD	Ø4.5 x 4mm - H3.5mm	50702FD	Ø4.5 x 6mm - H3.5mm
50701DE	Ø3.3 x 4mm - H4.5mm	50701FE	Ø3.3 x 6mm - H4.5mm	50702DE	Ø4.5 x 4mm - H4.5mm	50702FE	Ø4.5 x 6mm - H4.5mm
50701DF	Ø3.3 x 4mm - H5.5mm	50701FF	Ø3.3 x 6mm - H5.5mm	50702DF	Ø4.5 x 4mm - H5.5mm	50702FF	Ø4.5 x 6mm - H5.5mm

Análogo
100703



Ø2.5mm



- Rosca M1.8
- Ângulação Interna de 11.5°



Transfer
mold. Aberta
200703A



Transfer
mold. Fechada
200703B



Cicatrizador
Tampa
301703



Cicatrizador

Ø3.3		Ø4.5	
300703A	H0.8mm	300704A	H0.8mm
300703B	H1.5mm	300704B	H1.5mm
300703C	H2.5mm	300704C	H2.5mm
300703D	H3.5mm	300704D	H3.5mm
300703E	H4.5mm	300704E	H4.5mm
300703F	H5.5mm	300704F	H5.5mm



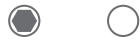
Pilar
Provisório



40703CA	40703SA	H0.8mm
40703CB	40703SB	H1.5mm
40703CC	40703SC	H2.5mm
400703CD	400703SD	H3.5mm
400703CE	400703SE	H4.5mm



Ucla Base
Metálica



70703CA	70703SA	H0.8mm
70703CB	70703SB	H1.5mm
70703CC	70703SC	H2.5mm
70703CD	70703SD	H3.5mm
70703CE	70703SE	H4.5mm



Mini pilar
Cônico



800703A	H0.8mm	800703D	H3.5mm
800703B	H1.5mm	800703E	H4.5mm
800703C	H2.5mm	800703F	H5.5mm

Componentes para Mini Pilar - Pág 36



Mini Pilar - Âng. 17°



Mini Pilar - Âng. 30°

80703BG	H1.5mm	80703BH	H1.5mm
80703CG	H2.5mm	80703CH	H2.5mm
80703DG	H3.5mm	80703DH	H3.5mm



Pilar
O'Ring



900703A	H0.8mm
900703B	H1.5mm
900703C	H2.5mm
900703D	H3.5mm
900703E	H4.5mm
900703F	H5.5mm



Parafuso
de Fixação

○ M18HND



Pilar GT



*Componentes Sobre o Pilar GT Pág.35

801007A	H0.8mm
801007B	H1.5mm
801007C	H2.5mm
801007D	H3.5mm
801007E	H4.5mm
801007F	H5.5mm



Pilar
Universal



*Componentes Sobre o
Pilar Universal Pág.35

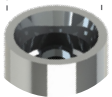
50708DA	Ø3.3 x 4mm - H0.8mm	50709DA	Ø4.5 x 4mm - H0.8mm	50708FA	Ø3.3 x 6mm - H0.8mm	50709FA	Ø4.5 x 6mm - H0.8mm
50708DB	Ø3.3 x 4mm - H1.5mm	50709DB	Ø4.5 x 4mm - H1.5mm	50708FB	Ø3.3 x 6mm - H1.5mm	50709FB	Ø4.5 x 6mm - H1.5mm
50708DC	Ø3.3 x 4mm - H2.5mm	50709DC	Ø4.5 x 4mm - H2.5mm	50708FC	Ø3.3 x 6mm - H2.5mm	50709FC	Ø4.5 x 6mm - H2.5mm
50708DD	Ø3.3 x 4mm - H3.5mm	50709DD	Ø4.5 x 4mm - H3.5mm	50708FD	Ø3.3 x 6mm - H3.5mm	50709FD	Ø4.5 x 6mm - H3.5mm
50708DE	Ø3.3 x 4mm - H4.5mm	50709DE	Ø4.5 x 4mm - H4.5mm	50708FE	Ø3.3 x 6mm - H4.5mm	50709FE	Ø4.5 x 6mm - H4.5mm
50708DF	Ø3.3 x 4mm - H5.5mm	50709DF	Ø4.5 x 4mm - H5.5mm	50708FF	Ø3.3 x 6mm - H5.5mm	50709FF	Ø4.5 x 6mm - H5.5mm



Análogo 100750



Ø3.5mm



Rosca M1.6



Transfer mold. Aberta

200750A



Transfer mold. Fechada

200750B



Cicatrizador Tampa

301750

Cicatrizador

300750B	H2mm
300750C	H3.5mm
300750E	H5mm
300750F	H6mm

Cicatrizador

300751B	H2mm
300751C	H3.5mm
300751E	H5mm
300751F	H6mm



Ucla Base Metálica

700750C	700750S	H1mm
700750CC	700750SC	H3mm
700750CD	700750SD	H4mm
700750CE	700750SE	H5mm



Pilar Provisório

400750C	400750S	H1.3mm
400750CC	400750SC	H3mm
400750CD	400750SD	H4mm
400750CE	400750SE	H5mm



Mini Pilar Cônico



800750A	H1mm
800750B	H2mm
800750C	H3mm
800750D	H4mm
800750E	H5mm
800750F	H6mm



Mini Pilar - Âng. 17°

80750BG	H2mm
80750CG	H3mm
80750DG	H4mm



Mini Pilar - Âng. 30°

80750CH	H3mm
80750DH	H4mm



Pilar O'Ring



900750B	H2mm
900750C	H3.5mm
900750E	H5mm
900750F	H6mm



Parafuso de Fixação



M16TNC

Prótese Parafusada - SRA

Pilar SRA



800751A	Ø3.5 X H1mm
800751B	Ø3.5 X H2.5mm
800751C	Ø3.5 X H4mm
800752A	Ø4.6 X H1mm
800752B	Ø4.6 X H2.5mm
800752C	Ø4.6 X H4mm

Cicatrizador Tampa

301751



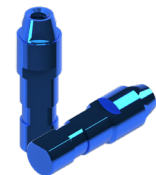
Transfer mold. Aberta (SRA)



Transfer mold. Fechada (SRA)

200751A	Ø3.5 - Mold. Aberta
200751B	Ø3.5 - Mold. Fechada
200752A	Ø4.6 - Mold. Aberta
200752B	Ø4.6 - Mold. Fechada

Análogo AP (SRA)



100751	Ø3.5
100752	Ø4.6



Pilar Provisório AP (SRA)

400751C	Ø3.5
400751S	Ø3.5
400752C	Ø4.6
400752S	Ø4.6



Ucla Plástica AP (SRA)

P600751C	Ø3.5
P600751S	Ø3.5
P600752C	Ø4.6
P600752S	Ø4.6

Parafuso de Fixação

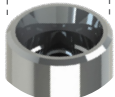


M14UMU

Análogo
100755



Ø4.1mm



Rosca M1.6



Transfer
mold. Aberta

200755A



Transfer
mold. Fechada

200755B



Cicatrizador
Tampa

301755



Cicatrizador



Cicatrizador

Ø4.5

300755B	H2mm
300755C	H3mm
300755D	H4mm
300755E	H5mm
300755F	H6mm

Ø5.0

300756B	H2mm
300756C	H3mm
300756D	H4mm
300756E	H5mm
300756F	H6mm



Ucla Base
Metálica



700755C	700755S	H1.2mm
700755CC	700755SC	H3mm
700755CD	700755SD	H4mm
700755CE	700755SE	H5mm



Pilar
Provisório



400755C	400755S	H1.4mm
400755CC	400755SC	H3mm
400755CD	400755SD	H4mm
400755CE	400755SE	H5mm



Mini Pilar
Cônico



800755A	H1mm
800755B	H2mm
800755C	H3mm
800755D	H4mm
800755E	H5mm
800755F	H6mm



Mini Pilar - Âng. 17°



80755BG	H2mm
80755CG	H3mm
80755DG	H4mm



Mini Pilar - Âng. 30°

80755CH	H3mm
80755DH	H4mm

Pilar
O'Ring



900755B	H2mm
900755C	H3.5mm
900755E	H5mm
900755F	H6mm

Parafuso de Fixação



MI6TRC

Prótese Parafusada - SRA



Pilar SRA



800756A	Ø4.6 X H1mm
800756B	Ø4.6 X H2.5mm
800756C	Ø4.6 X H4mm



Cicatrizador
Tampa

301752



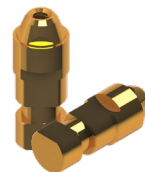
Transfer
mold. Aberta
(SRA)



Transfer
mold. Fechada
(SRA)

200752A	Ø4.6 - Mold. Aberta
200752B	Ø4.6 - Mold. Fechada

Análogo
AP (SRA)



100752

Ø4.6



Pilar Provisório
AP (SRA)

400752C
400752S



Ucla Plástica AP (SRA)

600752C
600752S



Parafuso
de Fixação

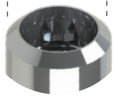
MI4UMU



Análogo
100730



Ø4.8mm



Rosca M2.0



Transfer
mold. Aberta
200730A



Transfer
mold. Fechada
200730B

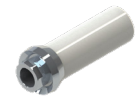


Cicatrizador
Tampa
301730



Cicatrizador

300730B	H2mm
300730C	H3mm
300730D	H4.5mm
300730F	H6mm



Ucla
Base Metálica

- 700730C
- 700730S



Pilar
Provisório

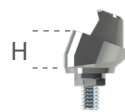
- 400730C
- 400730S



Mini Pilar
Cônico



800730A	H1mm
800730B	H2mm
800730C	H3mm
800730D	H4mm



Mini Pilar - Âng. 17°

80730BG	H1.5mm
80730CG	H2.5mm
80730DG	H3.5mm



Mini Pilar - Âng. 30°

80730CH	H2.5mm
80730DH	H3.5mm



Pilar
O'Ring



900730B	H2mm
900730C	H3mm
900730D	H4.5mm
900730F	H6mm

Parafuso de Fixação



M20TRN

Prótese cimentada

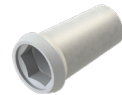
Análogo
CI
100730CI



Pilar SynOcta®
Cimentável



80730CI



Coping
Plástico CI

- 60730CCI
- 60730SCI



Análogo Pilar Sólido

100780A	H4mm
100780B	H5.5mm
100780C	H7mm



Pilar Sólido

500780A	H4mm
500780B	H5.5mm
500780C	H7mm

Prótese Parafusada - SO

Análogo
SO
100730AP



Pilar SynOcta®
80730AP



Transfer
mold. Aberta
200731A



Transfer
mold. Fechada
200731B



Coping
Plástica SO

- P60730CAP
- P60730SAP



Cicatrizador
Tampa
301731



Pilar
Provisório

- 400731C
- 400731S



Ucla Base
Metálica SO

- 700731C
- 700731S



Parafuso
de Fixação



M20TST



Análogo
100790



Ø3.5 / 4.5mm



Rosca M1.6



Transfer
mold. Aberta
200790A



Transfer
mold. Fechada
200790B



Cicatrizador

30790BB	Ø3.8 x 2mm - H1.5mm	30791BB	Ø4.5 x 2mm - H1.5mm
30790BC	Ø3.8 x 2mm - H2.5mm	30791BC	Ø4.5 x 2mm - H2.5mm
30790BD	Ø3.8 x 2mm - H3.5mm	30791BD	Ø4.5 x 2mm - H3.5mm
30790DB	Ø3.8 x 4mm - H1.5mm	30791DB	Ø4.5 x 4mm - H1.5mm
30790DC	Ø3.8 x 4mm - H2.5mm	30791DC	Ø4.5 x 4mm - H2.5mm
30790DD	Ø3.8 x 4mm - H3.5mm	30791DD	Ø4.5 x 4mm - H3.5mm



Ucla Base
Metálica



700790CA	700790SA	H1.5mm
700790CB	700790SB	H2.5mm
700790CC	700790SC	H3.5mm
700790CD	700790SD	H4.5mm



Mini Pilar Cônico



800790A	H1.5mm
800790B	H2.5mm
800790C	H3.5mm
800790D	H4.5mm
800790E	H5.5mm
800790F	H6.5mm



Parafuso
de Fixação
MI6HCOC



Prótese Parafusada - SRA



Pilar
Definitivo

500790B H2.5mm



Mini pilar
Cônico

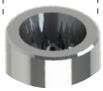


800791A	H1,5mm
800791B	H2.5mm
800791C	H3.5mm
800791D	H4.5mm

Análogo
100701



Ø2.1mm



Rosca M1.6



Transfer
mold. Aberta
200701A



Transfer
mold. Fechada
200701B



Cicatrizador

300701B	H2mm
300701C	H3mm
300701D	H4mm
300701E	H5mm
300701F	H6mm



Pilar
Provisório

400701C	400701S	H1mm
400701CB	400701SB	H2mm
400701CC	400701SC	H3mm
400701CD	400701SD	H4mm



Pilar Definitivo

500701A	H1mm
500701B	H2mm
500701C	H3mm
500701D	H4mm



Ucla Base
Metálica



700701C	700701S	H1mm
700701CB	700701SB	H2mm
700701CC	700701SC	H3mm
700701CD	700701SD	H4mm



Mini pilar
Cônico



800701A	H1mm
800701B	H2mm
800701C	H3mm
800701D	H4mm
800701E	H5mm
800701F	H6mm



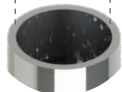
Parafuso
de Fixação
MI6HAT



Análogo
100801



Ø3,15mm



Rosca M1,8



Transfer
mold. Aberta
200801A



Transfer
mold. Fechada
200801B



Cicatrizador



Cicatrizador



Ø3,9

300801B	H2mm
300801C	H3mm
300801D	H4mm
300801E	H5mm
300801F	H6mm

Ø4,8

300802B	H2mm
300802C	H3mm
300802D	H4mm
300802E	H5mm
300802F	H6mm



Ucla Base
Metálica

70801CA	70801SA	H1mm
70801CB	70801SB	H2mm
70801CC	70801SC	H3mm
700801CD	700801SD	H4mm



Pilar
Provisório

400801C	400801S	H1,3mm
400801CC	400801SC	H1mm
400801CD	400801SD	H2mm
400801CE	400801SE	H3mm



Pilar
Definitivo

500801A	H1mm
500801B	H2mm
500801C	H3mm
500801D	H4mm



Mini Pilar
Cônico

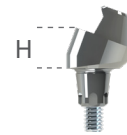


800801A	H1mm
800801B	H2mm
800801C	H3mm
800801D	H4mm
800801E	H5mm
800801F	H6mm



Parafuso
de Fixação

MI8HMI



Mini Pilar - Âng. 17°

80801BG	H2mm
80801CG	H3mm
80801DG	H4mm



Mini Pilar - Âng. 30°

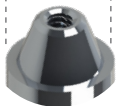
80801CH	H3mm
80801DH	H4mm



Análogo
101005



Ø4.8mm



Rosca M1.4



Transfer
mold. Aberta
201005A



Transfer
mold. Fechada
201005B



Tampa
de Proteção
301005



Pilar
Provisório
401005



Pilar
P/ Solda
401005E (Solda)



Coping
Plástico
P601005



Ucla Base
Metálica
701005



Parafuso
de Fixação
M14MU



Ø4mm



Barra de Titânio (1m)
Ø4mm
T04000136

Ø3.18mm



Barra de Titânio (1m)
Ø3.18mm
T03180136

Barra Curva



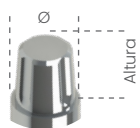
CT03180136 - Ø3.18mm
CT04000136 - Ø4.00mm

Ø0.8mm



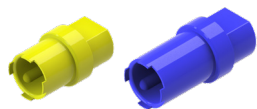
Fio de Titânio (1m)
Ø0.80mm
T00800136

Análogo do Pilar Universal



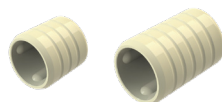
Ø x Alt.

100708D	Ø3.3 x 4mm
100708F	Ø3.3 x 6mm
100709D	Ø4.5 x 4mm
100709F	Ø4.5 x 6mm



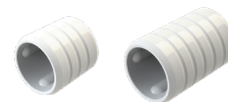
Poste Transfer do
Pilar Universal

200708D	Ø3.3 x 4mm
200708F	Ø3.3 x 6mm
200709D	Ø4.5 x 4mm
200709F	Ø4.5 x 6mm



Poste Provisório do
Pilar Universal

400708D	Ø3.3 x 4mm
400708F	Ø3.3 x 6mm
400709D	Ø4.5 x 4mm
400709F	Ø4.5 x 6mm



Coping Plástico do
Pilar Universal

600708D	Ø3.3 x 4mm
600708F	Ø3.3 x 6mm
600709D	Ø4.5 x 4mm
600709F	Ø4.5 x 6mm



Análogo
101007



Ø4.8mm



Rosca M2.0



Transfer
mold. Aberta
201007A



Transfer
mold. Fechada
201007B



Pilar
Provisório

- 401007C
- 401007S



Ucla Plástica

- P601007C
- P601007S



Ucla Base
Metálica

- 701007C
- 701007S



Cicatrizador
Tampa
301007



Pilar GT



801007A	H0.8mm
801007B	H1.5mm
801007C	H2.5mm
801007D	H3.5mm
801007E	H4.5mm
801007F	H5.5mm



Parafuso
de Fixação

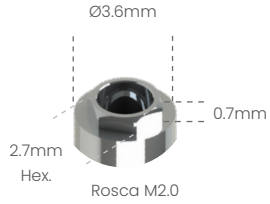
- M20BTI



Sistema Conexão Externa



Análogo
100108



Transfer mold.
Aberta
200108A



Transfer mold.
Fechada
200108B



Cicatrizador

300108B	H2mm
300108C	H3mm
300108D	H4mm
300108E	H5mm
300108F	H6mm



Pilar
Definitivo

500108A	H1mm
500108B	H2mm
500108C	H3mm
500108D	H4mm



Pilar
Provisório

- 400108C
- 400108S



Ucla
Plástica

- P600108C
- P600108S



Ucla
Base Metálica

- 700108C
- 700108S



Mini pilar
Cônico



800108A	H1mm
800108B	H2mm
800108C	H3mm
800108D	H4mm
800108E	H5mm
800108F	H6mm



Mini Pilar - Âng. 17°

80108BG	H2mm
80108CG	H3mm
80108DG	H4mm



Mini Pilar - Âng. 30°

80108CH	H3mm
80108DH	H4mm



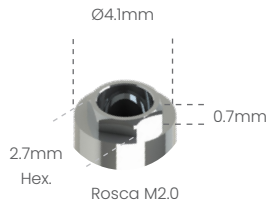
Parafuso
de Fixação

- M20QU



Possibilita a técnica de Plataforma Switching com o Sistema HE 5.0 3i®

Análogo
100105



Transfer mold.
Aberta
200105A



Transfer mold.
Fechada
200105B



Cicatrizador
Tampa
301105



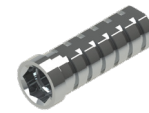
Cicatrizador

300105B	H2mm
300105C	H3mm
300105D	H4mm
300105E	H5mm
300105F	H6mm



Pilar
Definitivo

500105A	H1mm
500105B	H2mm
500105C	H3mm
500105D	H4mm



Pilar
Provisório

- 400105C
- 400105S



Ucla
Plástica

- P600105C
- P600105S



Ucla
Base Metálica

- 700105C
- 700105S



Mini pilar
Cônico



800105A	H1mm
800105B	H2mm
800105C	H3mm
800105D	H4mm
800105E	H5mm
800105F	H6mm



Pilar Definitivo Ang. 15°

50105AG	H1mm
50105BG	H2mm
50105CG	H3mm



Pilar Definitivo Ang. 25°

50105AH	H1mm
50105BH	H2mm
50105CH	H3mm



Mini Pilar - Âng. 17°

80105BG	H2mm
80105CG	H3mm
80105DG	H4mm



Mini Pilar - Âng. 30°

80105CH	H3mm
80105DH	H4mm



Pilar O'ring



900105A	H1mm
900105B	H2mm
900105C	H3mm
900105D	H4mm
900105E	H5mm
900105F	H6mm

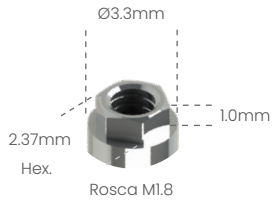


Parafuso
de Fixação

- M20QU



Análogo
100102



Transfer mold.
Aberta
200102A



Transfer mold.
Fechada
200102B





Cicatrizador

300102B	H2mm
300102C	H3mm
300102D	H4mm
300102E	H5mm
300102F	H6mm





Pilar
Provisório

-  400102C
-  400102S





Ucla
Plástica

-  P600102C
-  P600102S



Ucla
Base Metálica

-  700102C
-  700102S



Mini pilar
Cônico



800102A	H1mm
800102B	H2mm
800102C	H3mm
800102D	H4mm
800102E	H5mm
800102F	H6mm



H



Mini Pilar - Âng. 17°

80102BG	H2mm
80102CG	H3mm
80102DG	H4mm



H

Mini Pilar - Âng. 30°

80102CH	H3mm
80102DH	H4mm



Pilar
O'ring



900102A	H1mm
900102B	H2mm
900102C	H3mm
900102D	H4mm
900102E	H5mm
900102F	H6mm



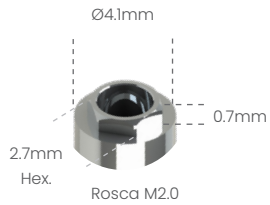
Parafuso
de Fixação

-  M18QU



Possibilita a técnica de Plataforma Switching com o Sistema HE 5.0 3i®

Análogo
100105



Transfer mold.
Aberta
200105A



Transfer mold.
Fechada
200105B



Cicatrizador
Tampa
301105



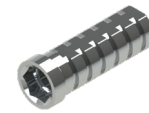
Cicatrizador

300105B	H2mm
300105C	H3mm
300105D	H4mm
300105E	H5mm
300105F	H6mm



Pilar
Definitivo

500105A	H1mm
500105B	H2mm
500105C	H3mm
500105D	H4mm



Pilar
Provisório

- 400105C
- 400105S



Ucla
Plástica

- P600105C
- P600105S



Ucla
Base Metálica

- 700105C
- 700105S



Mini pilar
Cônico



800105A	H1mm
800105B	H2mm
800105C	H3mm
800105D	H4mm
800105E	H5mm
800105F	H6mm



Pilar Definitivo Ang. 15°

50105AG	H1mm
50105BG	H2mm
50105CG	H3mm



Pilar Definitivo Ang. 25°

50105AH	H1mm
50105BH	H2mm
50105CH	H3mm



Mini Pilar - Âng. 17°

80105BG	H2mm
80105CG	H3mm
80105DG	H4mm



Mini Pilar - Âng. 30°

80105CH	H3mm
80105DH	H4mm



Pilar O'ring



900105A	H1mm
900105B	H2mm
900105C	H3mm
900105D	H4mm
900105E	H5mm
900105F	H6mm

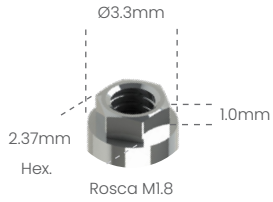


Parafuso
de Fixação

- M20QU



Análogo
100102



Transfer mold.
Aberta
200102A



Transfer mold.
Fechada
200102B



Cicatrizador

300102B	H2mm
300102C	H3mm
300102D	H4mm
300102E	H5mm
300102F	H6mm



Pilar
Provisório

-  400102C
-  400102S





Ucla
Plástica

-  P600102C
-  P600102S



Ucla
Base Metálica

-  700102C
-  700102S



Mini pilar
Cônico



800102A	H1mm
800102B	H2mm
800102C	H3mm
800102D	H4mm
800102E	H5mm
800102F	H6mm



Mini Pilar - Âng. 17°

80102BG	H2mm
80102CG	H3mm
80102DG	H4mm



Mini Pilar - Âng. 30°

80102CH	H3mm
80102DH	H4mm



Pilar
O'ring



900102A	H1mm
900102B	H2mm
900102C	H3mm
900102D	H4mm
900102E	H5mm
900102F	H6mm



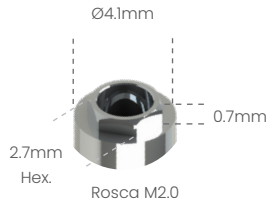
Parafuso
de Fixação

-  M18QU



Possibilita a técnica de Plataforma Switching com o Sistema HE 5.0 3i®

Análogo
100105



Transfer mold.
Aberta
200105A



Transfer mold.
Fechada
200105B

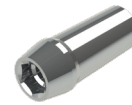


Cicatrizador
Tampa
301105



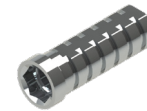
Cicatrizador

300105B	H2mm
300105C	H3mm
300105D	H4mm
300105E	H5mm
300105F	H6mm



Pilar
Definitivo

500105A	H1mm
500105B	H2mm
500105C	H3mm
500105D	H4mm



Pilar
Provisório

- 400105C
- 400105S



Ucla
Plástica

- P600105C
- P600105S



Ucla
Base Metálica

- 700105C
- 700105S



Mini pilar
Cônico



800105A	H1mm
800105B	H2mm
800105C	H3mm
800105D	H4mm
800105E	H5mm
800105F	H6mm



Pilar Definitivo Ang. 15°

50105AG	H1mm
50105BG	H2mm
50105CG	H3mm



Pilar Definitivo Ang. 25°

50105AH	H1mm
50105BH	H2mm
50105CH	H3mm



Mini Pilar - Âng. 17°

80105BG	H2mm
80105CG	H3mm
80105DG	H4mm



Mini Pilar - Âng. 30°

80105CH	H3mm
80105DH	H4mm



Pilar O'ring



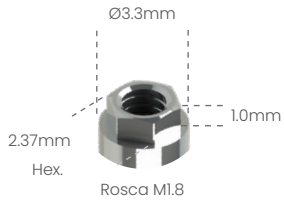
900105A	H1mm
900105B	H2mm
900105C	H3mm
900105D	H4mm
900105E	H5mm
900105F	H6mm



Parafuso
de Fixação
 M20QU



Análogo
100102



Transfer mold.
Aberta
200102A



Transfer mold.
Fechada
200102B




Cicatrizador

300102B	H2mm
300102C	H3mm
300102D	H4mm
300102E	H5mm
300102F	H6mm




Pilar
Provisório

-  400102C
-  400102S





Ucla
Plástica

-  P600102C
-  P600102S



Ucla
Base Metálica

-  700102C
-  700102S



Mini pilar
Cônico



800102A	H1mm
800102B	H2mm
800102C	H3mm
800102D	H4mm
800102E	H5mm
800102F	H6mm



Mini Pilar - Âng. 17°

80102BG	H2mm
80102CG	H3mm
80102DG	H4mm



Mini Pilar - Âng. 30°

80102CH	H3mm
80102DH	H4mm



Pilar
O'ring



900102A	H1mm
900102B	H2mm
900102C	H3mm
900102D	H4mm
900102E	H5mm
900102F	H6mm



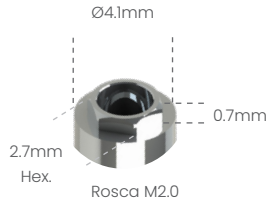
Parafuso
de Fixação

-  M18QU



Possibilita a técnica de Plataforma Switching com o Sistema HE 5.0 3i*

Análogo
100105



Transfer mold.
Aberta
200105A



Transfer mold.
Fechada
200105B



Cicatrizador
Tampa
301105



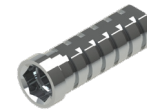
Cicatrizador

300105B	H2mm
300105C	H3mm
300105D	H4mm
300105E	H5mm
300105F	H6mm



Pilar
Definitivo

500105A	H1mm
500105B	H2mm
500105C	H3mm
500105D	H4mm



Pilar
Provisório

- 400105C
- 400105S



Ucla
Plástica

- P600105C
- P600105S



Ucla
Base Metálica

- 700105C
- 700105S



Mini pilar
Cônico



800105A	H1mm
800105B	H2mm
800105C	H3mm
800105D	H4mm
800105E	H5mm
800105F	H6mm



Pilar Definitivo Ang. 15°

50105AG	H1mm
50105BG	H2mm
50105CG	H3mm



Pilar Definitivo Ang. 25°

50105AH	H1mm
50105BH	H2mm
50105CH	H3mm



Mini Pilar - Âng. 17°

80105BG	H2mm
80105CG	H3mm
80105DG	H4mm



Mini Pilar - Âng. 30°

80105CH	H3mm
80105DH	H4mm



Pilar O'ring



900105A	H1mm
900105B	H2mm
900105C	H3mm
900105D	H4mm
900105E	H5mm
900105F	H6mm

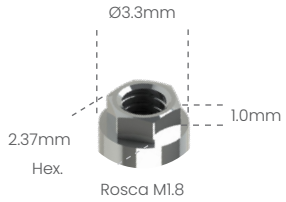


Parafuso
de Fixação

- M20QU



Análogo
100102



Transfer mold.
Aberta
200102A



Transfer mold.
Fechada
200102B



Cicatrizador

300102B	H2mm
300102C	H3mm
300102D	H4mm
300102E	H5mm
300102F	H6mm



Pilar
Provisório

- 400102C
- 400102S



Ucla
Plástica

- P600102C
- P600102S



Ucla
Base Metálica

- 700102C
- 700102S



Mini pilar
Cônico



800102A	H1mm
800102B	H2mm
800102C	H3mm
800102D	H4mm
800102E	H5mm
800102F	H6mm



Mini Pilar - Âng. 17°

80102BG	H2mm
80102CG	H3mm
80102DG	H4mm



Mini Pilar - Âng. 30°

80102CH	H3mm
80102DH	H4mm



Pilar
O'ring



900102A	H1mm
900102B	H2mm
900102C	H3mm
900102D	H4mm
900102E	H5mm
900102F	H6mm

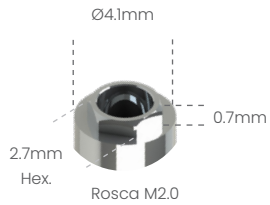


Parafuso
de Fixação

- M18QU



Análogo
100105



Transfer mold.
Aberta
200105A



Transfer mold.
Fechada
200105B



Cicatrizador
Tampa
301105



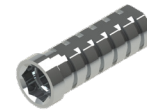
Cicatrizador

300105B	H2mm
300105C	H3mm
300105D	H4mm
300105E	H5mm
300105F	H6mm



Pilar
Definitivo

500105A	H1mm
500105B	H2mm
500105C	H3mm
500105D	H4mm



Pilar
Provisório

- 400105C
- 400105S



Ucla
Plástica

- P600105C
- P600105S



Ucla
Base Metálica

- 700105C
- 700105S



Mini pilar
Cônico



800105A	H1mm
800105B	H2mm
800105C	H3mm
800105D	H4mm
800105E	H5mm
800105F	H6mm



Pilar Definitivo Ang. 15°

50105AG	H1mm
50105BG	H2mm
50105CG	H3mm



Pilar Definitivo Ang. 25°

50105AH	H1mm
50105BH	H2mm
50105CH	H3mm



Mini Pilar - Âng. 17°

80105BG	H2mm
80105CG	H3mm
80105DG	H4mm



Mini Pilar - Âng. 30°

80105CH	H3mm
80105DH	H4mm



Pilar O'ring



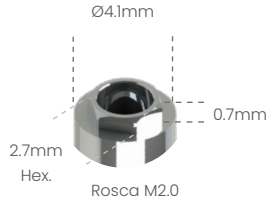
900105A	H1mm
900105B	H2mm
900105C	H3mm
900105D	H4mm
900105E	H5mm
900105F	H6mm



Parafuso
de Fixação
M20QU



Análogo
100105



Transfer mold.
Aberta
200105A



Transfer mold.
Fechada
200105B



Cicatrizador
Tampa
301105



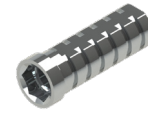
Cicatrizador

300105B	H2mm
300105C	H3mm
300105D	H4mm
300105E	H5mm
300105F	H6mm



Pilar
Definitivo

500105A	H1mm
500105B	H2mm
500105C	H3mm
500105D	H4mm



Pilar
Provisório

- 400105C
- 400105S



Ucla
Plástica

- P600105C
- P600105S



Ucla
Base Metálica

- 700105C
- 700105S



Mini pilar
Cônico



800105A	H1mm
800105B	H2mm
800105C	H3mm
800105D	H4mm
800105E	H5mm
800105F	H6mm



Pilar Definitivo Ang. 15°

50105AG	H1mm
50105BG	H2mm
50105CG	H3mm



Pilar Definitivo Ang. 25°

50105AH	H1mm
50105BH	H2mm
50105CH	H3mm



Mini Pilar - Âng. 17°

80105BG	H2mm
80105CG	H3mm
80105DG	H4mm



Mini Pilar - Âng. 30°

80105CH	H3mm
80105DH	H4mm



Pilar O'ring



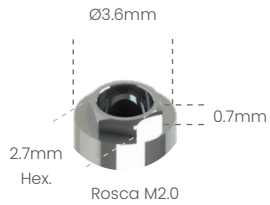
900105A	H1mm
900105B	H2mm
900105C	H3mm
900105D	H4mm
900105E	H5mm
900105F	H6mm



Parafuso
de Fixação
M20QU



Análogo
100108



Transfer mold.
Aberta
200108A



Transfer mold.
Fechada
200108B



Cicatrizador

300108B	H2mm
300108C	H3mm
300108D	H4mm
300108E	H5mm
300108F	H6mm





Pilar
Definitivo

500108A	H1mm
500108B	H2mm
500108C	H3mm
500108D	H4mm





Pilar
Provisório

-  400108C
-  400108S





Ucla
Plástica

-  P600108C
-  P600108S



Ucla
Base Metálica

-  700108C
-  700108S



Mini pilar
Cônico



800108A	H1mm
800108B	H2mm
800108C	H3mm
800108D	H4mm
800108E	H5mm
800108F	H6mm



Mini Pilar - Âng. 17°

80108BG	H2mm
80108CG	H3mm
80108DG	H4mm



Mini Pilar - Âng. 30°

80108CH	H3mm
80108DH	H4mm



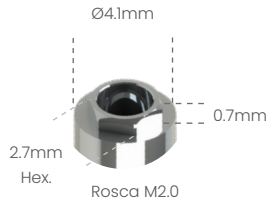
Parafuso
de Fixação

-  M20QU



*Implante 3.25 apenas para Classic e Torq Int. Switch

Análogo
100105



Transfer mold.
Aberta
200105A



Transfer mold.
Fechada
200105B



Cicatrizador
Tampa
301105



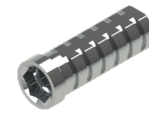
Cicatrizador

300105B	H2mm
300105C	H3mm
300105D	H4mm
300105E	H5mm
300105F	H6mm



Pilar
Definitivo

500105A	H1mm
500105B	H2mm
500105C	H3mm
500105D	H4mm



Pilar
Provisório

- 400105C
- 400105S



Ucla
Plástica

- P600105C
- P600105S



Ucla
Base Metálica

- 700105C
- 700105S



Mini pilar
Cônico



800105A	H1mm
800105B	H2mm
800105C	H3mm
800105D	H4mm
800105E	H5mm
800105F	H6mm



Pilar Definitivo Ang. 15°

50105AG	H1mm
50105BG	H2mm
50105CG	H3mm



Pilar Definitivo Ang. 25°

50105AH	H1mm
50105BH	H2mm
50105CH	H3mm



Mini Pilar - Âng. 17°

80105BG	H2mm
80105CG	H3mm
80105DG	H4mm



Mini Pilar - Âng. 30°

80105CH	H3mm
80105DH	H4mm



Pilar O'ring



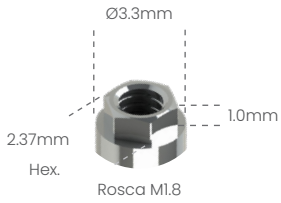
900105A	H1mm
900105B	H2mm
900105C	H3mm
900105D	H4mm
900105E	H5mm
900105F	H6mm



Parafuso
de Fixação
M20QU



Análogo
100102



Transfer mold.
Aberta
200102A



Transfer mold.
Fechada
200102B



Cicatrizador

300102B	H2mm
300102C	H3mm
300102D	H4mm
300102E	H5mm
300102F	H6mm



Pilar
Provisório
● 400102C
○ 400102S



Ucla
Plástica

● P600102C
○ P600102S



Ucla
Base Metálica

● 700102C
○ 700102S



Mini pilar
Cônico



800102A	H1mm
800102B	H2mm
800102C	H3mm
800102D	H4mm
800102E	H5mm
800102F	H6mm



Mini Pilar - Âng. 17°

80102BG	H2mm
80102CG	H3mm
80102DG	H4mm

Mini Pilar - Âng. 30°

80102CH	H3mm
80102DH	H4mm



Pilar
O'ring



900102A	H1mm
900102B	H2mm
900102C	H3mm
900102D	H4mm
900102E	H5mm
900102F	H6mm



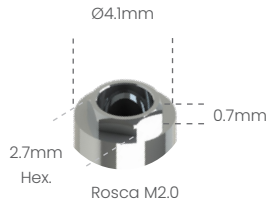
Parafuso
de Fixação

■ M18QU



Possibilita a técnica de Plataforma Switching com o Sistema HE 5.0 3!

Análogo
100105



Transfer mold.
Aberta
200105A



Transfer mold.
Fechada
200105B

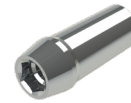


Cicatrizador

300105B	H2mm
300105C	H3mm
300105D	H4mm
300105E	H5mm
300105F	H6mm

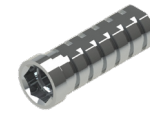


Cicatrizador
Tampa
301105



Pilar
Definitivo

500105A	H1mm
500105B	H2mm
500105C	H3mm
500105D	H4mm



Pilar
Provisório

- 400105C
- 400105S



Ucla
Plástica

- P600105C
- P600105S



Ucla
Base Metálica

- 700105C
- 700105S



Mini pilar
Cônico



800105A	H1mm
800105B	H2mm
800105C	H3mm
800105D	H4mm
800105E	H5mm
800105F	H6mm



Pilar Definitivo Ang. 15°

50105AG	H1mm
50105BG	H2mm
50105CG	H3mm



Pilar Definitivo Ang. 25°

50105AH	H1mm
50105BH	H2mm
50105CH	H3mm



Mini Pilar - Âng. 17°

80105BG	H2mm
80105CG	H3mm
80105DG	H4mm



Mini Pilar - Âng. 30°

80105CH	H3mm
80105DH	H4mm



Pilar O'ring



900105A	H1mm
900105B	H2mm
900105C	H3mm
900105D	H4mm
900105E	H5mm
900105F	H6mm

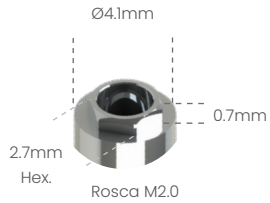


Parafuso
de Fixação
 M20QU



*Implante 3.25 apenas para Classic e Torq Int. Switch

Análogo
100105



Transfer mold.
Aberta
200105A



Transfer mold.
Fechada
200105B



Cicatrizador
Tampa
301105



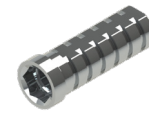
Cicatrizador

300105B	H2mm
300105C	H3mm
300105D	H4mm
300105E	H5mm
300105F	H6mm



Pilar
Definitivo

500105A	H1mm
500105B	H2mm
500105C	H3mm
500105D	H4mm



Pilar
Provisório

- 400105C
- 400105S



Ucla
Plástica

- P600105C
- P600105S



Ucla
Base Metálica

- 700105C
- 700105S



Mini pilar
Cônico



800105A	H1mm
800105B	H2mm
800105C	H3mm
800105D	H4mm
800105E	H5mm
800105F	H6mm



Pilar Definitivo Ang. 15°

50105AG	H1mm
50105BG	H2mm
50105CG	H3mm



Pilar Definitivo Ang. 25°

50105AH	H1mm
50105BH	H2mm
50105CH	H3mm



Mini Pilar - Âng. 17°

80105BG	H2mm
80105CG	H3mm
80105DG	H4mm



Mini Pilar - Âng. 30°

80105CH	H3mm
80105DH	H4mm



Pilar O'ring



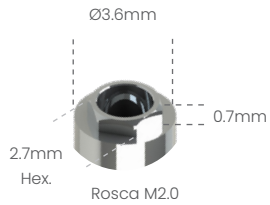
900105A	H1mm
900105B	H2mm
900105C	H3mm
900105D	H4mm
900105E	H5mm
900105F	H6mm



Parafuso
de Fixação
M20QU



Análogo
100108



Transfer mold.
Aberta
200108A



Transfer mold.
Fechada
200108B



Cicatrizador

300108B	H2mm
300108C	H3mm
300108D	H4mm
300108E	H5mm
300108F	H6mm





Pilar
Definitivo

500108A	H1mm
500108B	H2mm
500108C	H3mm
500108D	H4mm



Pilar
Provisório

-  400108C
-  400108S





Ucla
Plástica

-  P600108C
-  P600108S



Ucla
Base Metálica

-  700108C
-  700108S



Mini pilar
Cônico



800108A	H1mm
800108B	H2mm
800108C	H3mm
800108D	H4mm
800108E	H5mm
800108F	H6mm



Mini Pilar - Âng. 17°

80108BG	H2mm
80108CG	H3mm
80108DG	H4mm



Mini Pilar - Âng. 30°

80108CH	H3mm
80108DH	H4mm

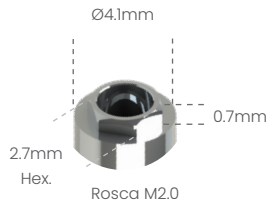


Parafuso
de Fixação

-  M20QU



Análogo
100105



Transfer mold.
Aberta
200105A



Transfer mold.
Fechada
200105B



Cicatrizador
Tampa
301105



Cicatrizador

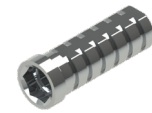
300105B	H2mm
300105C	H3mm
300105D	H4mm
300105E	H5mm
300105F	H6mm

Possibilita a técnica de Plataforma Switching com o Sistema HE 5.0 3i®



Pilar
Definitivo

500105A	H1mm
500105B	H2mm
500105C	H3mm
500105D	H4mm



Pilar
Provisório

- 400105C
- 400105S



Ucla
Plástica

- P600105C
- P600105S



Ucla
Base Metálica

- 700105C
- 700105S



Mini pilar
Cônico



800105A	H1mm
800105B	H2mm
800105C	H3mm
800105D	H4mm
800105E	H5mm
800105F	H6mm



Pilar Definitivo Ang. 15°

50105AG	H1mm
50105BG	H2mm
50105CG	H3mm



Pilar Definitivo Ang. 25°

50105AH	H1mm
50105BH	H2mm
50105CH	H3mm



Mini Pilar - Âng. 17°

80105BG	H2mm
80105CG	H3mm
80105DG	H4mm



Mini Pilar - Âng. 30°

80105CH	H3mm
80105DH	H4mm



Pilar O'ring



900105A	H1mm
900105B	H2mm
900105C	H3mm
900105D	H4mm
900105E	H5mm
900105F	H6mm



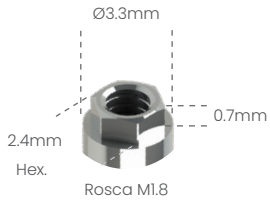
Parafuso
de Fixação

- M20QU



Análogo

100103



Transfer mold.
Aberta

200103A



Transfer mold.
Fechada

200103B



Cicatrizador

300102B	H2mm
300102C	H3mm
300102D	H4mm
300102E	H5mm
300102F	H6mm



Pilar
Provisório

● 400103C

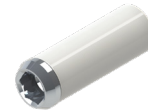
○ 400103S



Ucla
Plástica

● P600103C

○ P600103S



Ucla
Base Metálica

● 700103C

○ 700103S



Mini pilar
Cônico



800102A	H1mm
800102B	H2mm
800102C	H3mm
800102D	H4mm
800102E	H5mm
800102F	H6mm



Mini Pilar - Âng. 17°

80103BG	H2mm
80103CG	H3mm
80103DG	H4mm

Mini Pilar - Âng. 30°

80103CH	H3mm
80103DH	H4mm



Pilar
O'ring



900102A	H1mm
900102B	H2mm
900102C	H3mm
900102D	H4mm
900102E	H5mm
900102F	H6mm



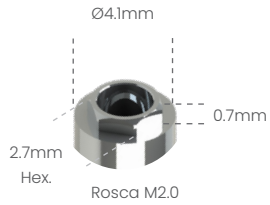
Parafuso
de Fixação

□ M18QU



Possibilita a técnica de Plataforma Switching com o Sistema HE 5.0 3i®

Análogo
100105



Transfer mold.
Aberta
200105A



Transfer mold.
Fechada
200105B



Cicatrizador

300105B	H2mm
300105C	H3mm
300105D	H4mm
300105E	H5mm
300105F	H6mm

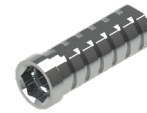


Cicatrizador
Tampa
301105



Pilar
Definitivo

500105A	H1mm
500105B	H2mm
500105C	H3mm
500105D	H4mm



Pilar
Provisório

- 400105C
- 400105S



Ucla
Plástica

- P600105C
- P600105S



Ucla
Base Metálica

- 700105C
- 700105S



Mini pilar
Cônico



800105A	H1mm
800105B	H2mm
800105C	H3mm
800105D	H4mm
800105E	H5mm
800105F	H6mm



Pilar Definitivo Ang. 15°

50105AG	H1mm
50105BG	H2mm
50105CG	H3mm



Pilar Definitivo Ang. 25°

50105AH	H1mm
50105BH	H2mm
50105CH	H3mm



Mini Pilar - Âng. 17°

80105BG	H2mm
80105CG	H3mm
80105DG	H4mm



Mini Pilar - Âng. 30°

80105CH	H3mm
80105DH	H4mm



Pilar O'ring



900105A	H1mm
900105B	H2mm
900105C	H3mm
900105D	H4mm
900105E	H5mm
900105F	H6mm

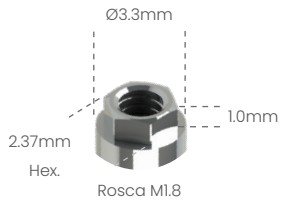


Parafuso
de Fixação

- M20QU



Análogo
100102



Transfer mold.
Aberta
200102A



Transfer mold.
Fechada
200102B



Cicatrizador

300102B	H2mm
300102C	H3mm
300102D	H4mm
300102E	H5mm
300102F	H6mm



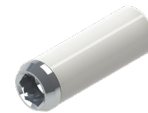
Pilar
Provisório

- 400102C
- 400102S



Ucla
Plástica

- P600102C
- P600102S



Ucla
Base Metálica

- 700102C
- 700102S



Mini pilar
Cônico



800102A	H1mm
800102B	H2mm
800102C	H3mm
800102D	H4mm
800102E	H5mm
800102F	H6mm



Mini Pilar - Âng. 17°



80102BG	H2mm
80102CG	H3mm
80102DG	H4mm

Mini Pilar - Âng. 30°



80102CH	H3mm
80102DH	H4mm



Pilar
O'ring



900102A	H1mm
900102B	H2mm
900102C	H3mm
900102D	H4mm
900102E	H5mm
900102F	H6mm



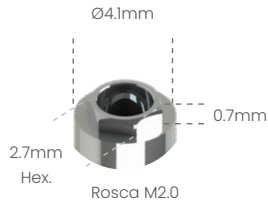
Parafuso
de Fixação

- M18QU



Possibilita a técnica de Plataforma Switching com o Sistema HE 5.0 3i®

Análogo
100105



Transfer mold.
Aberta
200105A



Transfer mold.
Fechada
200105B



Cicatrizador
Tampa
301105



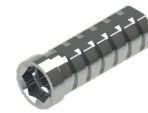
Cicatrizador

300105B	H2mm
300105C	H3mm
300105D	H4mm
300105E	H5mm
300105F	H6mm



Pilar
Definitivo

500105A	H1mm
500105B	H2mm
500105C	H3mm
500105D	H4mm



Pilar
Provisório

- 400105C
- 400105S



Ucla
Plástica

- P600105C
- P600105S



Ucla
Base Metálica

- 700105C
- 700105S



Mini pilar
Cônico



800105A	H1mm
800105B	H2mm
800105C	H3mm
800105D	H4mm
800105E	H5mm
800105F	H6mm



Pilar Definitivo Ang. 15°

50105AG	H1mm
50105BG	H2mm
50105CG	H3mm



Pilar Definitivo Ang. 25°

50105AH	H1mm
50105BH	H2mm
50105CH	H3mm



Mini Pilar – Âng. 17°

80105BG	H2mm
80105CG	H3mm
80105DG	H4mm



Mini Pilar – Âng. 30°

80105CH	H3mm
80105DH	H4mm



Pilar O'ring



900105A	H1mm
900105B	H2mm
900105C	H3mm
900105D	H4mm
900105E	H5mm
900105F	H6mm



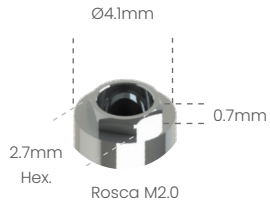
Parafuso
de Fixação

- M20QU



Possibilita a técnica de Plataforma Switching com o Sistema HE 5.0 3i*

Análogo
100105



Transfer mold.
Aberta
200105A



Transfer mold.
Fechada
200105B



Cicatrizador
Tampa
301105



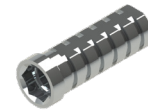
Cicatrizador

300105B	H2mm
300105C	H3mm
300105D	H4mm
300105E	H5mm
300105F	H6mm



Pilar
Definitivo

500105A	H1mm
500105B	H2mm
500105C	H3mm
500105D	H4mm



Pilar
Provisório

- 400105C
- 400105S



Ucla
Plástica

- P600105C
- P600105S



Ucla
Base Metálica

- 700105C
- 700105S



Mini pilar
Cônico



800105A	H1mm
800105B	H2mm
800105C	H3mm
800105D	H4mm
800105E	H5mm
800105F	H6mm



Pilar Definitivo Ang. 15°

50105AG	H1mm
50105BG	H2mm
50105CG	H3mm



Pilar Definitivo Ang. 25°

50105AH	H1mm
50105BH	H2mm
50105CH	H3mm



Mini Pilar - Âng. 17°

80105BG	H2mm
80105CG	H3mm
80105DG	H4mm



Mini Pilar - Âng. 30°

80105CH	H3mm
80105DH	H4mm



Pilar O'ring



900105A	H1mm
900105B	H2mm
900105C	H3mm
900105D	H4mm
900105E	H5mm
900105F	H6mm



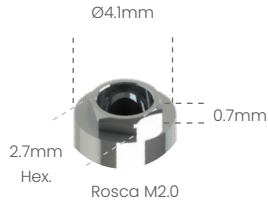
Parafuso
de Fixação

- M20QU



Possibilita a técnica de Plataforma Switching com o Sistema HE 5.0 3i*

Análogo
100105



Transfer mold.
Aberta
200105A



Transfer mold.
Fechada
200105B



Cicatrizador
Tampa
301105



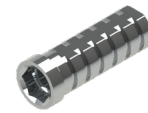
Cicatrizador

300105B	H2mm
300105C	H3mm
300105D	H4mm
300105E	H5mm
300105F	H6mm



Pilar
Definitivo

500105A	H1mm
500105B	H2mm
500105C	H3mm
500105D	H4mm



Pilar
Provisório

- 400105C
- 400105S



Ucla
Plástica

- P600105C
- P600105S



Ucla
Base Metálica

- 700105C
- 700105S



Mini pilar
Cônico



800105A	H1mm
800105B	H2mm
800105C	H3mm
800105D	H4mm
800105E	H5mm
800105F	H6mm



Pilar Definitivo Ang. 15°

50105AG	H1mm
50105BG	H2mm
50105CG	H3mm



Pilar Definitivo Ang. 25°

50105AH	H1mm
50105BH	H2mm
50105CH	H3mm



Mini Pilar - Âng. 17°

80105BG	H2mm
80105CG	H3mm
80105DG	H4mm



Mini Pilar - Âng. 30°

80105CH	H3mm
80105DH	H4mm



Pilar O'ring



900105A	H1mm
900105B	H2mm
900105C	H3mm
900105D	H4mm
900105E	H5mm
900105F	H6mm



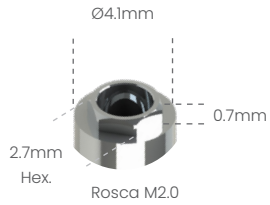
Parafuso
de Fixação

- M20QU



Possibilita a técnica de Plataforma Switching com o Sistema HE 5.0 3j®

Análogo
100105



Transfer mold.
Aberta
200105A



Transfer mold.
Fechada
200105B



Cicatrizador
Tampa
301105



Cicatrizador

300105B	H2mm
300105C	H3mm
300105D	H4mm
300105E	H5mm
300105F	H6mm



Pilar
Definitivo

500105A	H1mm
500105B	H2mm
500105C	H3mm
500105D	H4mm



Pilar
Provisório

- 400105C
- 400105S



Ucla
Plástica

- P600105C
- P600105S



Ucla
Base Metálica

- 700105C
- 700105S



Mini pilar
Cônico



800105A	H1mm
800105B	H2mm
800105C	H3mm
800105D	H4mm
800105E	H5mm
800105F	H6mm



Pilar Definitivo Ang. 15°

50105AG	H1mm
50105BG	H2mm
50105CG	H3mm



Pilar Definitivo Ang. 25°

50105AH	H1mm
50105BH	H2mm
50105CH	H3mm



Mini Pilar - Âng. 17°

80105BG	H2mm
80105CG	H3mm
80105DG	H4mm



Mini Pilar - Âng. 30°

80105CH	H3mm
80105DH	H4mm



Pilar O'ring



900105A	H1mm
900105B	H2mm
900105C	H3mm
900105D	H4mm
900105E	H5mm
900105F	H6mm

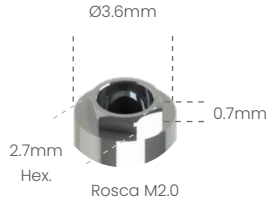


Parafuso
de Fixação

- M20QU



Análogo
100108



Transfer mold.
Aberta
200108A



Transfer mold.
Fechada
200108B



Cicatrizador

300108B	H2mm
300108C	H3mm
300108D	H4mm
300108E	H5mm
300108F	H6mm





Pilar
Definitivo

500108A	H1mm
500108B	H2mm
500108C	H3mm
500108D	H4mm





Pilar
Provisório

-  400108C
-  400108S





Ucla
Plástica

-  P600108C
-  P600108S



Ucla
Base Metálica

-  700108C
-  700108S



Mini pilar
Cônico



800108A	H1mm
800108B	H2mm
800108C	H3mm
800108D	H4mm
800108E	H5mm
800108F	H6mm



Mini Pilar - Âng. 17°

80108BG	H2mm
80108CG	H3mm
80108DG	H4mm



Mini Pilar - Âng. 30°

80108CH	H3mm
80108DH	H4mm



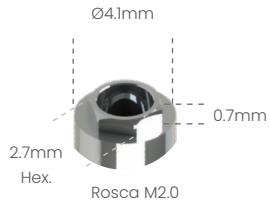
Parafuso
de Fixação

-  M20QU



Possibilita a técnica de Plataforma Switching com o Sistema HE 5.0 3j®

Análogo
100105



Transfer mold.
Aberta
200105A



Transfer mold.
Fechada
200105B



Cicatrizador
Tampa
301105



Cicatrizador

300105B	H2mm
300105C	H3mm
300105D	H4mm
300105E	H5mm
300105F	H6mm



Pilar
Definitivo

500105A	H1mm
500105B	H2mm
500105C	H3mm
500105D	H4mm



Pilar
Provisório

- 400105C
- 400105S



Ucla
Plástica

- P600105C
- P600105S



Ucla
Base Metálica

- 700105C
- 700105S



Mini pilar
Cônico



800105A	H1mm
800105B	H2mm
800105C	H3mm
800105D	H4mm
800105E	H5mm
800105F	H6mm



Pilar Definitivo Ang. 15°

50105AG	H1mm
50105BG	H2mm
50105CG	H3mm



Pilar Definitivo Ang. 25°

50105AH	H1mm
50105BH	H2mm
50105CH	H3mm



Mini Pilar - Âng. 17°

80105BG	H2mm
80105CG	H3mm
80105DG	H4mm



Mini Pilar - Âng. 30°

80105CH	H3mm
80105DH	H4mm



Pilar O'ring



900105A	H1mm
900105B	H2mm
900105C	H3mm
900105D	H4mm
900105E	H5mm
900105F	H6mm

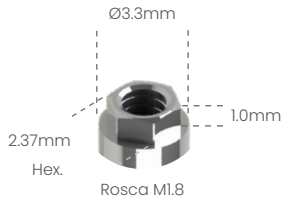


Parafuso
de Fixação
M20QU



Análogo

100102



Transfer mold.
Aberta

200102A



Transfer mold.
Fechada

200102B





Cicatrizador

300102B	H2mm
300102C	H3mm
300102D	H4mm
300102E	H5mm
300102F	H6mm




Pilar
Provisório

-  400102C
-  400102S





Ucla
Plástica

-  P600102C
-  P600102S



Ucla
Base Metálica

-  700102C
-  700102S



Mini pilar
Cônico



800102A	H1mm
800102B	H2mm
800102C	H3mm
800102D	H4mm
800102E	H5mm
800102F	H6mm



Mini Pilar - Âng. 17°



80102BG	H2mm
80102CG	H3mm
80102DG	H4mm

Mini Pilar - Âng. 30°



80102CH	H3mm
80102DH	H4mm



Pilar
O'ring



900102A	H1mm
900102B	H2mm
900102C	H3mm
900102D	H4mm
900102E	H5mm
900102F	H6mm



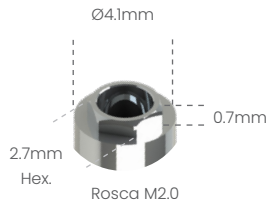
Parafuso
de Fixação

-  M18QU



Possibilita a técnica de Plataforma Switching com o Sistema HE 5.0 3j®

Análogo
100105



Transfer mold.
Aberta
200105A



Transfer mold.
Fechada
200105B

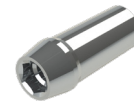


Cicatrizador
Tampa
301105



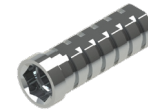
Cicatrizador

300105B	H2mm
300105C	H3mm
300105D	H4mm
300105E	H5mm
300105F	H6mm





Pilar
Definitivo

500105A	H1mm
500105B	H2mm
500105C	H3mm
500105D	H4mm





Pilar
Provisório

-  400105C
-  400105S





Ucla
Plástica

-  P600105C
-  P600105S



Ucla
Base Metálica

-  700105C
-  700105S



Mini pilar
Cônico



800105A	H1mm
800105B	H2mm
800105C	H3mm
800105D	H4mm
800105E	H5mm
800105F	H6mm



Pilar Definitivo Ang. 15°

50105AG	H1mm
50105BG	H2mm
50105CG	H3mm



Pilar Definitivo Ang. 25°

50105AH	H1mm
50105BH	H2mm
50105CH	H3mm



Mini Pilar - Âng. 17°

80105BG	H2mm
80105CG	H3mm
80105DG	H4mm



Mini Pilar - Âng. 30°

80105CH	H3mm
80105DH	H4mm



Pilar O'ring



900105A	H1mm
900105B	H2mm
900105C	H3mm
900105D	H4mm
900105E	H5mm
900105F	H6mm

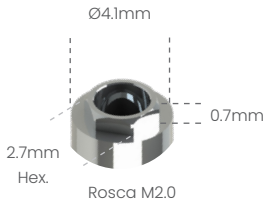


Parafuso
de Fixação
M20QU



Possibilita a técnica de Plataforma Switching com o Sistema HE 5.0 3i®

Análogo
100105



Transfer mold.
Aberta
200105A



Transfer mold.
Fechada
200105B



Cicatrizador
Tampa
301105



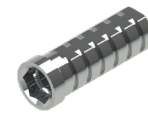
Cicatrizador

300105B	H2mm
300105C	H3mm
300105D	H4mm
300105E	H5mm
300105F	H6mm



Pilar
Definitivo

500105A	H1mm
500105B	H2mm
500105C	H3mm
500105D	H4mm



Pilar
Provisório

- 400105C
- 400105S



Ucla
Plástica

- P600105C
- P600105S



Ucla
Base Metálica

- 700105C
- 700105S



Mini pilar
Cônico



800105A	H1mm
800105B	H2mm
800105C	H3mm
800105D	H4mm
800105E	H5mm
800105F	H6mm



Pilar Definitivo Ang. 15°

50105AG	H1mm
50105BG	H2mm
50105CG	H3mm



Pilar Definitivo Ang. 25°

50105AH	H1mm
50105BH	H2mm
50105CH	H3mm



Mini Pilar - Âng. 17°

80105BG	H2mm
80105CG	H3mm
80105DG	H4mm



Mini Pilar - Âng. 30°

80105CH	H3mm
80105DH	H4mm



Pilar O'ring



900105A	H1mm
900105B	H2mm
900105C	H3mm
900105D	H4mm
900105E	H5mm
900105F	H6mm

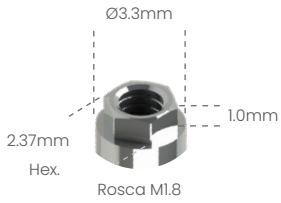


Parafuso
de Fixação

- M20QU



Análogo
100102



Transfer mold.
Aberta
200102A



Transfer mold.
Fechada
200102B



Cicatrizador

300102B	H2mm
300102C	H3mm
300102D	H4mm
300102E	H5mm
300102F	H6mm



Pilar
Provisório
● 400102C
○ 400102S



Ucla
Plástica

● P600102C
○ P600102S



Ucla
Base Metálica

● 700102C
○ 700102S



Mini pilar
Cônico



800102A	H1mm
800102B	H2mm
800102C	H3mm
800102D	H4mm
800102E	H5mm
800102F	H6mm



Mini Pilar - Âng. 17°

80102BG	H2mm
80102CG	H3mm
80102DG	H4mm

Mini Pilar - Âng. 30°

80102CH	H3mm
80102DH	H4mm



Pilar
O'ring



900102A	H1mm
900102B	H2mm
900102C	H3mm
900102D	H4mm
900102E	H5mm
900102F	H6mm



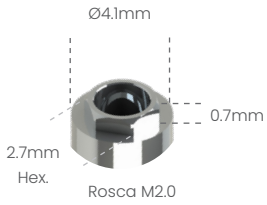
Parafuso
de Fixação

□ M18QU



Possibilita a técnica de Plataforma Switching com o Sistema HE 5.0 3i*

Análogo
100105



Transfer mold.
Aberta
200105A



Transfer mold.
Fechada
200105B



Cicatrizador
Tampa
301105



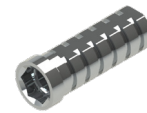
Cicatrizador

300105B	H2mm
300105C	H3mm
300105D	H4mm
300105E	H5mm
300105F	H6mm





Pilar
Definitivo

500105A	H1mm
500105B	H2mm
500105C	H3mm
500105D	H4mm





Pilar
Provisório

-  400105C
-  400105S





Ucla
Plástica

-  P600105C
-  P600105S



Ucla
Base Metálica

-  700105C
-  700105S



Mini pilar
Cônico



800105A	H1mm
800105B	H2mm
800105C	H3mm
800105D	H4mm
800105E	H5mm
800105F	H6mm



Pilar Definitivo Ang. 15°

50105AG	H1mm
50105BG	H2mm
50105CG	H3mm



Pilar Definitivo Ang. 25°

50105AH	H1mm
50105BH	H2mm
50105CH	H3mm



Mini Pilar - Âng. 17°

80105BG	H2mm
80105CG	H3mm
80105DG	H4mm



Mini Pilar - Âng. 30°

80105CH	H3mm
80105DH	H4mm



Pilar O'ring



900105A	H1mm
900105B	H2mm
900105C	H3mm
900105D	H4mm
900105E	H5mm
900105F	H6mm

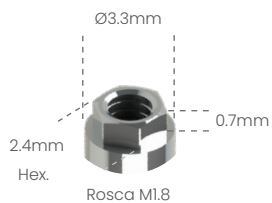


Parafuso
de Fixação

-  M20QU



Análogo
100103



Transfer mold.
Aberta
200103A



Transfer mold.
Fechada
200103B



Cicatrizador

300102B	H2mm
300102C	H3mm
300102D	H4mm
300102E	H5mm
300102F	H6mm



Pilar
Provisório

- 400103C
- 400103S



Ucla
Plástica

- P600103C
- P600103S



Ucla
Base Metálica

- 700103C
- 700103S



Mini pilar
Cônico



800102A	H1mm
800102B	H2mm
800102C	H3mm
800102D	H4mm
800102E	H5mm
800102F	H6mm



Mini Pilar - Âng. 17°

80103BG	H2mm
80103CG	H3mm
80103DG	H4mm

Mini Pilar - Âng. 30°

80103CH	H3mm
80103DH	H4mm



Pilar
O'ring



900102A	H1mm
900102B	H2mm
900102C	H3mm
900102D	H4mm
900102E	H5mm
900102F	H6mm



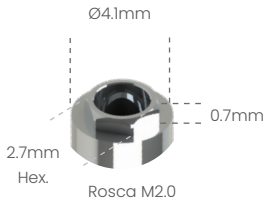
Parafuso
de Fixação

- M18QU



Possibilita a técnica de Plataforma Switching com o Sistema HE 5.0 3i®

Análogo
100105



Transfer mold.
Aberta
200105A



Transfer mold.
Fechada
200105B



Cicatrizador
Tampa
301105



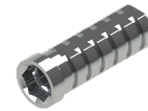
Cicatrizador

300105B	H2mm
300105C	H3mm
300105D	H4mm
300105E	H5mm
300105F	H6mm





Pilar
Definitivo

500105A	H1mm
500105B	H2mm
500105C	H3mm
500105D	H4mm




Pilar
Provisório

-  400105C
-  400105S





Ucla
Plástica

-  P600105C
-  P600105S



Ucla
Base Metálica

-  700105C
-  700105S



Mini pilar
Cônico



800105A	H1mm
800105B	H2mm
800105C	H3mm
800105D	H4mm
800105E	H5mm
800105F	H6mm



Pilar Definitivo Ang. 15°

50105AG	H1mm
50105BG	H2mm
50105CG	H3mm



Pilar Definitivo Ang. 25°

50105AH	H1mm
50105BH	H2mm
50105CH	H3mm



Mini Pilar - Âng. 17°

80105BG	H2mm
80105CG	H3mm
80105DG	H4mm



Mini Pilar - Âng. 30°

80105CH	H3mm
80105DH	H4mm



Pilar O'ring



900105A	H1mm
900105B	H2mm
900105C	H3mm
900105D	H4mm
900105E	H5mm
900105F	H6mm

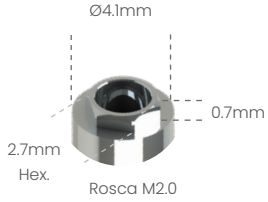


Parafuso
de Fixação
M20QU



Possibilita a técnica de Plataforma Switching com o Sistema HE 5.0 3i®

Análogo
100105



Transfer mold.
Aberta
200105A



Transfer mold.
Fechada
200105B



Cicatrizador
Tampa
301105



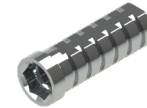
Cicatrizador

300105B	H2mm
300105C	H3mm
300105D	H4mm
300105E	H5mm
300105F	H6mm



Pilar
Definitivo

500105A	H1mm
500105B	H2mm
500105C	H3mm
500105D	H4mm



Pilar
Provisório

- 400105C
- 400105S



Ucla
Plástica

- P600105C
- P600105S



Ucla
Base Metálica

- 700105C
- 700105S



Mini pilar
Cônico



800105A	H1mm
800105B	H2mm
800105C	H3mm
800105D	H4mm
800105E	H5mm
800105F	H6mm



Pilar Definitivo Ang. 15°

50105AG	H1mm
50105BG	H2mm
50105CG	H3mm



Pilar Definitivo Ang. 25°

50105AH	H1mm
50105BH	H2mm
50105CH	H3mm



Mini Pilar - Âng. 17°

80105BG	H2mm
80105CG	H3mm
80105DG	H4mm



Mini Pilar - Âng. 30°

80105CH	H3mm
80105DH	H4mm



Pilar O'ring



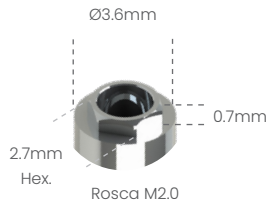
900105A	H1mm
900105B	H2mm
900105C	H3mm
900105D	H4mm
900105E	H5mm
900105F	H6mm



Parafuso
de Fixação
 M20QU



Análogo
100108



Transfer mold.
Aberta
200108A



Transfer mold.
Fechada
200108B



Cicatrizador

300108B	H2mm
300108C	H3mm
300108D	H4mm
300108E	H5mm
300108F	H6mm





Pilar
Definitivo

500108A	H1mm
500108B	H2mm
500108C	H3mm
500108D	H4mm





Pilar
Provisório

-  400108C
-  400108S





Ucla
Plástica

-  P600108C
-  P600108S



Ucla
Base Metálica

-  700108C
-  700108S



Mini pilar
Cônico



800108A	H1mm
800108B	H2mm
800108C	H3mm
800108D	H4mm
800108E	H5mm
800108F	H6mm



Mini Pilar - Âng. 17°

80108BG	H2mm
80108CG	H3mm
80108DG	H4mm



Mini Pilar - Âng. 30°

80108CH	H3mm
80108DH	H4mm



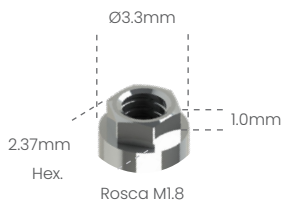
Parafuso
de Fixação

-  M20QU



Análogo

100102



Transfer mold.
Aberta

200102A



Transfer mold.
Fechada

200102B





Cicatrizador

300102B	H2mm
300102C	H3mm
300102D	H4mm
300102E	H5mm
300102F	H6mm





Pilar
Provisório

-  400102C
-  400102S



Ucla
Plástica

-  P600102C
-  P600102S



Ucla
Base Metálica

-  700102C
-  700102S



Mini pilar
Cônico



800102A	H1mm
800102B	H2mm
800102C	H3mm
800102D	H4mm
800102E	H5mm
800102F	H6mm



Mini Pilar - Âng. 17°

80102BG	H2mm
80102CG	H3mm
80102DG	H4mm



Mini Pilar - Âng. 30°

80102CH	H3mm
80102DH	H4mm



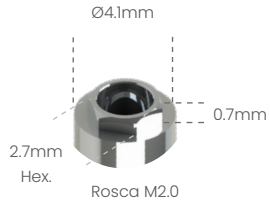
Parafuso
de Fixação

-  M18QU



Possibilita a técnica de Plataforma Switching com o Sistema HE 5.0 3i®

Análogo
100105



Transfer mold.
Aberta
200105A



Transfer mold.
Fechada
200105B



Cicatrizador
Tampa
301105



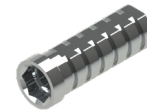
Cicatrizador

300105B	H2mm
300105C	H3mm
300105D	H4mm
300105E	H5mm
300105F	H6mm





Pilar
Definitivo

500105A	H1mm
500105B	H2mm
500105C	H3mm
500105D	H4mm





Pilar
Provisório

-  400105C
-  400105S





Ucla
Plástica

-  P600105C
-  P600105S



Ucla
Base Metálica

-  700105C
-  700105S



Mini pilar
Cônico



800105A	H1mm
800105B	H2mm
800105C	H3mm
800105D	H4mm
800105E	H5mm
800105F	H6mm



Pilar Definitivo Ang. 15°

50105AG	H1mm
50105BG	H2mm
50105CG	H3mm



Pilar Definitivo Ang. 25°

50105AH	H1mm
50105BH	H2mm
50105CH	H3mm



Mini Pilar - Âng. 17°

80105BG	H2mm
80105CG	H3mm
80105DG	H4mm



Mini Pilar - Âng. 30°

80105CH	H3mm
80105DH	H4mm




Pilar O'ring



900105A	H1mm
900105B	H2mm
900105C	H3mm
900105D	H4mm
900105E	H5mm
900105F	H6mm

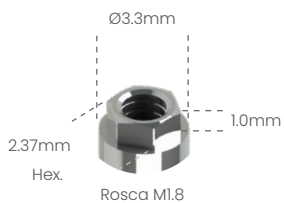


Parafuso
de Fixação

-  M20QU



Análogo
100102



Transfer mold.
Aberta
200102A



Transfer mold.
Fechada
200102B





Cicatrizador

300102B	H2mm
300102C	H3mm
300102D	H4mm
300102E	H5mm
300102F	H6mm




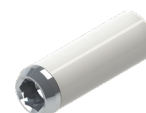
Pilar
Provisório

-  400102C
-  400102S



Ucla
Plástica

-  P600102C
-  P600102S



Ucla
Base Metálica

-  700102C
-  700102S



Mini pilar
Cônico



800102A	H1mm
800102B	H2mm
800102C	H3mm
800102D	H4mm
800102E	H5mm
800102F	H6mm



Mini Pilar - Âng. 17°

80102BG	H2mm
80102CG	H3mm
80102DG	H4mm

Mini Pilar - Âng. 30°

80102CH	H3mm
80102DH	H4mm



Pilar
O'ring



900102A	H1mm
900102B	H2mm
900102C	H3mm
900102D	H4mm
900102E	H5mm
900102F	H6mm



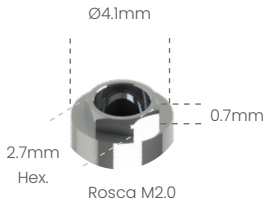
Parafuso
de Fixação

-  M18QU



Possibilita a técnica de Plataforma Switching com o Sistema HE 5.0 3^o

Análogo
100105



Transfer mold.
Aberta
200105A



Transfer mold.
Fechada
200105B



Cicatrizador
Tampa
301105



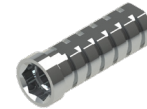
Cicatrizador

300105B	H2mm
300105C	H3mm
300105D	H4mm
300105E	H5mm
300105F	H6mm



Pilar
Definitivo

500105A	H1mm
500105B	H2mm
500105C	H3mm
500105D	H4mm



Pilar
Provisório

- 400105C
- 400105S



Ucla
Plástica

- P600105C
- P600105S



Ucla
Base Metálica

- 700105C
- 700105S



Mini pilar
Cônico



800105A	H1mm
800105B	H2mm
800105C	H3mm
800105D	H4mm
800105E	H5mm
800105F	H6mm



Pilar Definitivo Ang. 15°

50105AG	H1mm
50105BG	H2mm
50105CG	H3mm



Pilar Definitivo Ang. 25°

50105AH	H1mm
50105BH	H2mm
50105CH	H3mm



Mini Pilar - Âng. 17°

80105BG	H2mm
80105CG	H3mm
80105DG	H4mm



Mini Pilar - Âng. 30°

80105CH	H3mm
80105DH	H4mm



Pilar O'ring



900105A	H1mm
900105B	H2mm
900105C	H3mm
900105D	H4mm
900105E	H5mm
900105F	H6mm

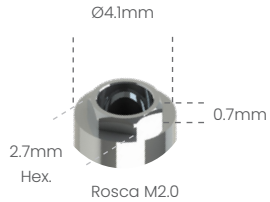


Parafuso
de Fixação
M20QU



Possibilita a técnica de Plataforma Switching com o Sistema HE 5.0 3i®

Análogo
100105



Transfer mold.
Aberta
200105A



Transfer mold.
Fechada
200105B

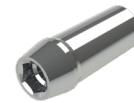


Cicatrizador
Tampa
301105



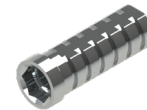
Cicatrizador

300105B	H2mm
300105C	H3mm
300105D	H4mm
300105E	H5mm
300105F	H6mm



Pilar
Definitivo

500105A	H1mm
500105B	H2mm
500105C	H3mm
500105D	H4mm



Pilar
Provisório

- 400105C
- 400105S



Ucla
Plástica

- P600105C
- P600105S



Ucla
Base Metálica

- 700105C
- 700105S



Mini pilar
Cônico



800105A	H1mm
800105B	H2mm
800105C	H3mm
800105D	H4mm
800105E	H5mm
800105F	H6mm



Pilar Definitivo Ang. 15°

50105AG	H1mm
50105BG	H2mm
50105CG	H3mm



Pilar Definitivo Ang. 25°

50105AH	H1mm
50105BH	H2mm
50105CH	H3mm



Mini Pilar - Âng. 17°

80105BG	H2mm
80105CG	H3mm
80105DG	H4mm



Mini Pilar - Âng. 30°

80105CH	H3mm
80105DH	H4mm



Pilar O'ring



900105A	H1mm
900105B	H2mm
900105C	H3mm
900105D	H4mm
900105E	H5mm
900105F	H6mm

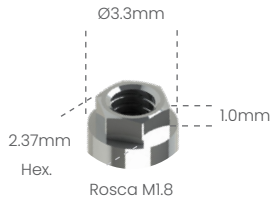


Parafuso
de Fixação

- M20QU



Análogo
100102



Transfer mold.
Aberta
200102A



Transfer mold.
Fechada
200102B



Cicatrizador

300102B	H2mm
300102C	H3mm
300102D	H4mm
300102E	H5mm
300102F	H6mm



Pilar
Provisório

- 400102C
- 400102S



Ucla
Plástica

- P600102C
- P600102S



Ucla
Base Metálica

- 700102C
- 700102S



Mini pilar
Cônico



800102A	H1mm
800102B	H2mm
800102C	H3mm
800102D	H4mm
800102E	H5mm
800102F	H6mm



Mini Pilar - Âng. 17°

80102BG	H2mm
80102CG	H3mm
80102DG	H4mm

Mini Pilar - Âng. 30°

80102CH	H3mm
80102DH	H4mm



Pilar
O'ring



900102A	H1mm
900102B	H2mm
900102C	H3mm
900102D	H4mm
900102E	H5mm
900102F	H6mm



Parafuso
de Fixação

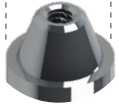
- M18QU



Análogo
101005



Ø4.8mm



Rosca M1.4



Transfer
mold. Aberta

201005A



Transfer
mold. Fechada

201005B



Tampa
de Proteção

○ 301005



Pilar
Provisório

○ 401005



Pilar
P/ Solda

○ 401005E (Solda)



Coping
Plástico

○ P601005



Ucla Base
Metálica

○ 701005



Parafuso
de Fixação

○ M14MU



Ø4mm



Barra de Titânio (1m)
Ø4mm

T04000136

Ø3.18mm



Barra de Titânio (1m)
Ø3.18mm

T03180136

Barra Curva



CT03180136 - Ø3.18mm
CT04000136 - Ø4.00mm

Ø0.8mm



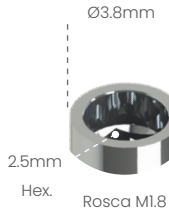
Fio de Titânio (1m)
Ø0.80mm

T00800136

Sistema Conexão Interna



Análogo
100316



Transfer mold.
Aberta
200316A

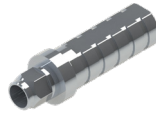


Transfer mold.
Fechada
200316B



Cicatrizador

300307B	H2mm
300307C	H3mm
300307D	H4mm
300307E	H5mm
300307F	H6mm



Pilar
Provisório
● 400316C
○ 400316S



Ucla
Plástica

- P600316C
- P600316S



Ucla
Base Metálica

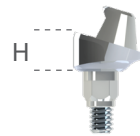
- 700316C
- 700316S

Possibilita a técnica de Plataforma Switching com o Sistema HI 4.5/5.0 SIN® e Sistema HI 3.75 a 5.0 Conexão®

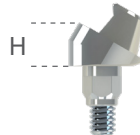


Mini pilar
Cônico
20 N.cm

800316A	H1mm
800316B	H2mm
800316C	H3mm
800316D	H4mm
800316E	H5mm
800316F	H6mm



20 N.cm



20 N.cm

Mini Pilar - Âng. 17°

80316BG	H2mm
80316CG	H3mm
80316DG	H4mm

Mini Pilar - Âng. 30°

80316CH	H3mm
80316DH	H4mm



Pilar
O'Ring

900316A	H1mm
900316B	H2mm
900316C	H3mm
900316D	H4mm
900316E	H5mm
900316F	H6mm

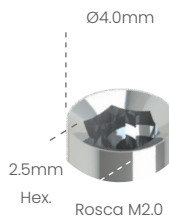


Parafuso
de Fixação

- M18QCN

20 N.cm

Análogo
100204



Transfer mold.
Aberta
200204A



Transfer mold.
Fechada
200204B



Cicatrizador

300204B	H2mm
300204C	H3mm
300204D	H4mm
300204E	H5mm
300204F	H6mm

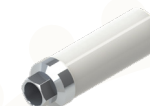


Pilar
Provisório
● 400204C
○ 400204S



Ucla
Plástica

- P600204C
- P600204S



Ucla
Base Metálica

- 700204C
- 700204S



Mini pilar
Cônico
32 N.cm

800204A	H1mm
800204B	H2mm
800204C	H3mm
800204D	H4mm
800204E	H5mm
800204F	H6mm



32 N.cm



32 N.cm

Mini Pilar - Âng. 17°

80204BG	H2mm
80204CG	H3mm
80204DG	H4mm

Mini Pilar - Âng. 30°

80204CH	H3mm
80204DH	H4mm



Pilar
O'Ring
20 N.cm

900204A	H1mm
900204B	H2mm
900204C	H3mm
900204D	H4mm
900204E	H5mm
900204F	H6mm

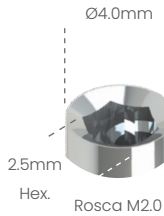


Parafuso
de Fixação

- M20QU

32 N.cm

Análogo
100204



Transfer mold.
Aberta
200204A



Transfer mold.
Fechada
200204B



Cicatrizador

300204B	H2mm
300204C	H3mm
300204D	H4mm
300204E	H5mm
300204F	H6mm



Pilar
Provisório
● 400204C
○ 400204S



Ucla
Plástica

● P600204C
○ P600204S



Ucla
Base Metálica

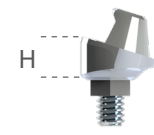
● 700204C
○ 700204S



Mini pilar
Cônico

32
N.cm

800204A	H1mm
800204B	H2mm
800204C	H3mm
800204D	H4mm
800204E	H5mm
800204F	H6mm



Mini Pilar - Âng. 17°

80204BG	H2mm
80204CG	H3mm
80204DG	H4mm

20
N.cm



Mini Pilar - Âng. 30°

80204CH	H3mm
80204DH	H4mm



Pilar
O'Ring

20
N.cm

900204A	H1mm
900204B	H2mm
900204C	H3mm
900204D	H4mm
900204E	H5mm
900204F	H6mm



Parafuso
de Fixação

□ M20QU

32
N.cm

Análogo
100208



Transfer mold.
Aberta
200208A



Transfer mold.
Fechada
200208B



Cicatrizador

300208B	H2mm
300208C	H3mm
300208D	H4mm
300208E	H5mm
300208F	H6mm



Pilar
Provisório
● 400208C
○ 400208S



Ucla
Plástica

● P600208C
○ P600208S



Ucla
Base Metálica

● 700208C
○ 700208S



Mini pilar
Cônico

20
N.cm

800208A	H1mm
800208B	H2mm
800208C	H3mm
800208D	H4mm
800208E	H5mm
800208F	H6mm



Mini Pilar - Âng. 17°

80208BG	H2mm
80208CG	H3mm
80208DG	H4mm

20
N.cm



Mini Pilar - Âng. 30°

80208CH	H3mm
80208DH	H4mm



Pilar
O'ring

20
N.cm

900208A	H1mm
900208B	H2mm
900208C	H3mm
900208D	H4mm

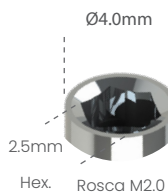


Parafuso
de Fixação

□ M18QU

20
N.cm

Análogo
100209



Transfer mold.
Aberta
200209A

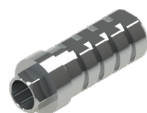


Transfer mold.
Fechada
200209B



Cicatrizador

300209B	H2mm
300209C	H3mm
300209D	H4mm
300209E	H5mm
300209F	H6mm



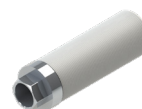
Pilar
Provisório

400209C
400209S



Ucla
Plástica

P600209C
P600209S



Ucla
Base Metálica

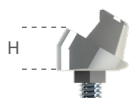
700209C
700209S



Mini pilar
Cônico



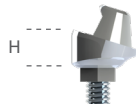
800209A	H1mm
800209B	H2mm
800209C	H3mm
800209D	H4mm
800209E	H5mm
800209F	H6mm



Mini Pilar - Âng. 17°



80209BG	H2mm
80209CG	H3mm
80209DG	H4mm



Mini Pilar - Âng. 30°

80209CH	H3mm
80209DH	H4mm



Pilar
O'ring



900209A	H1mm
900209B	H2mm
900209C	H3mm
900209D	H4mm

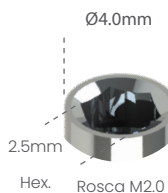


Parafuso
de Fixação

M20QU



Análogo
100209



Transfer mold.
Aberta
200209A



Transfer mold.
Fechada
200209B



Cicatrizador

300209B	H2mm
300209C	H3mm
300209D	H4mm
300209E	H5mm
300209F	H6mm



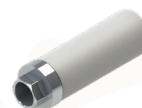
Pilar
Provisório

400209C
400209S



Ucla
Plástica

P600209C
P600209S



Ucla
Base Metálica

700209C
700209S



Mini pilar
Cônico



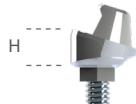
800209A	H1mm
800209B	H2mm
800209C	H3mm
800209D	H4mm
800209E	H5mm
800209F	H6mm



Mini Pilar - Âng. 17°



80209BG	H2mm
80209CG	H3mm
80209DG	H4mm



Mini Pilar - Âng. 30°

80209CH	H3mm
80209DH	H4mm



Pilar
O'ring



900209A	H1mm
900209B	H2mm
900209C	H3mm
900209D	H4mm

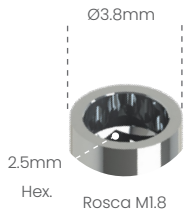


Parafuso
de Fixação

M20QU



Análogo
100316



Transfer mold.
Aberta
200316A

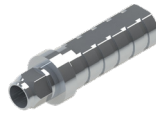


Transfer mold.
Fechada
200316B



Cicatrizador

300307B	H2mm
300307C	H3mm
300307D	H4mm
300307E	H5mm
300307F	H6mm



Pilar
Provisório

400316C
400316S



Ucla
Plástica

P600316C
P600316S



Ucla
Base Metálica

700316C
700316S



Mini pilar
Cônico

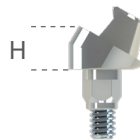


800316A	H1mm
800316B	H2mm
800316C	H3mm
800316D	H4mm
800316E	H5mm
800316F	H6mm



Mini Pilar - Âng. 17°

80316BG	H2mm
80316CG	H3mm
80316DG	H4mm



Mini Pilar - Âng. 30°

80316CH	H3mm
80316DH	H4mm



Pilar
O'Ring



900316A	H1mm
900316B	H2mm
900316C	H3mm
900316D	H4mm
900316E	H5mm
900316F	H6mm

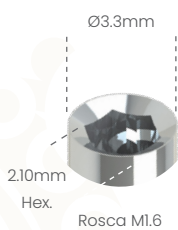


Parafuso
de Fixação

M18QCN



Análogo
100799



Cicatrizador

300799B	H2mm
300799C	H3mm
300799D	H4mm
300799E	H5mm
300799F	H6mm



Transfer mold.
Aberta
200799A



Transfer mold.
Fechada
200799B



Ucla
Base Metálica

700799C	700799S	H1.5mm
---------	---------	--------



Parafuso
de Fixação

M16HMI



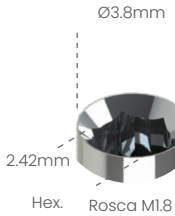
Mini pilar
Cônico



800799A	H1mm
800799B	H2mm
800799C	H3mm
800799D	H4mm
800799E	H5mm
800799F	H6mm



Análogo
100800



Transfer mold.
Aberta
200800A



Transfer mold.
Fechada
200800B



Cicatrizador

Ø4.0

300800B	H2mm
300800C	H3mm
300800D	H4mm
300800E	H5mm
300800F	H6mm



Cicatrizador

Ø4.8

300803B	H2mm
300803C	H3mm
300803D	H4mm
300803E	H5mm
300803F	H6mm



Pilar
Provisório
● 400800C
○ 400800S



Ucla
Plástica
● P600800C
○ P600800S



Ucla
Base Metálica

● 700800C ○ 700800S H1.2mm



Mini pilar
Cônico



800800A	H1mm
800800B	H2mm
800800C	H3mm
800800D	H4mm
800800E	H5mm
800800F	H6mm



Mini Pilar - Âng. 17°

80800BG	H2mm
80800CG	H3mm
80800DG	H4mm

Mini Pilar - Âng. 30°

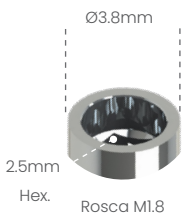
80800CH	H3mm
80800DH	H4mm



Parafuso
de Fixação
M18HMI



Análogo
100316



Transfer mold.
Aberta
200316A

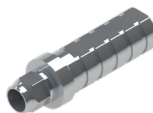


Transfer mold.
Fechada
200316B



Cicatrizador

300307B	H2mm
300307C	H3mm
300307D	H4mm
300307E	H5mm
300307F	H6mm



Pilar
Provisório
● 400316C
○ 400316S



Ucla
Plástica
● P600316C
○ P600316S



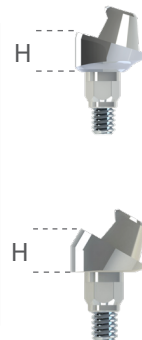
Ucla
Base Metálica
● 700316C
○ 700316S



Mini pilar
Cônico



800316A	H1mm
800316B	H2mm
800316C	H3mm
800316D	H4mm
800316E	H5mm
800316F	H6mm



Mini Pilar - Âng. 17°

80316BG	H2mm
80316CG	H3mm
80316DG	H4mm

Mini Pilar - Âng. 30°

80316CH	H3mm
80316DH	H4mm



Pilar
O'Ring

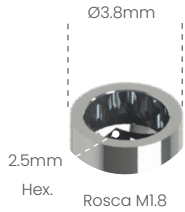
900316A	H1mm
900316B	H2mm
900316C	H3mm
900316D	H4mm
900316E	H5mm
900316F	H6mm



Parafuso
de Fixação
M18QC



Análogo
100316



Transfer mold.
Aberta
200316A

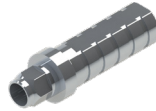


Transfer mold.
Fechada
200316B



Cicatrizador

300307B	H2mm
300307C	H3mm
300307D	H4mm
300307E	H5mm
300307F	H6mm



Pilar
Provisório
● 400316C
○ 400316S



Ucla
Plástica
● P600316C
○ P600316S

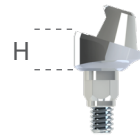


Ucla
Base Metálica
● 700316C
○ 700316S



Mini pilar
Cônico
20 N.cm

800316A	H1mm
800316B	H2mm
800316C	H3mm
800316D	H4mm
800316E	H5mm
800316F	H6mm

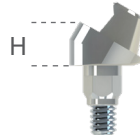


Mini Pilar - Âng. 17°

80316BG	H2mm
80316CG	H3mm
80316DG	H4mm

Mini Pilar - Âng. 30°

80316CH	H3mm
80316DH	H4mm



Pilar
O'Ring

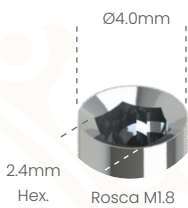
900316A	H1mm
900316B	H2mm
900316C	H3mm
900316D	H4mm
900316E	H5mm
900316F	H6mm



Parafuso
de Fixação
■ M18QC



Análogo
100113



Transfer mold.
Aberta
200113A



Transfer mold.
Fechada
200113B



Cicatrizador

300113B	H2mm
300113C	H3mm
300113D	H4mm
300113E	H5mm
300113F	H6mm



Pilar
Provisório
● 400113C
○ 400113S



Ucla
Plástica
● P600113C
○ P600113S



Ucla
Base Metálica
● 700113C
○ 700113S

Possibilita a técnica de Plataforma Switching com o Sistema HI 5.0 Titanium Fix®



Mini pilar
Cônico
20 N.cm

800113A	H1mm
800113B	H2mm
800113C	H3mm
800113D	H4mm
800113E	H5mm
800113F	H6mm



Mini Pilar - Âng. 17°

80113BG	H2mm
80113CG	H3mm
80113DG	H4mm

Mini Pilar - Âng. 30°

80113CH	H3mm
80113DH	H4mm



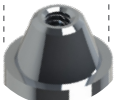
Parafuso
de Fixação
■ M18QU



Análogo
101005



Ø4.8mm



Rosca M1.4



Transfer
mold. Aberta
201005A



Transfer
mold. Fechada
201005B



Tampa
de Proteção
301005



Pilar
Provisório
401005



Pilar
P/ Solda
401005E (Solda)



Coping
Plástico
P601005



Ucla Base
Metálica
701005



Parafuso
de Fixação
M14MU



Ø4mm



Barra de Titânio (1m)
Ø4mm
T04000136

Ø3.18mm



Barra de Titânio (1m)
Ø3.18mm
T03180136

Barra Curva



CT03180136 - Ø3.18mm
CT04000136 - Ø4.00mm

Ø0.8mm



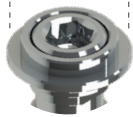
Fio de Titânio (1m)
Ø0.80mm
T00800136

Uclafix



UclaFix

Ø3.5mm



Chave Hex. 1.2mm
Parafuso M1.4



CÓDIGO

701006

INFORMAÇÕES TÉCNICAS

A UclaFix é um componente protético que permite reabilitar com sucesso casos onde o parafuso saíra por vestibular ou incisal, através da fixação do coping sobre o pilar personalizado, substituindo assim a cimentação.

Portanto, em casos críticos, devido a posição desfavorável do implante, a UclaFix trará uma solução estética e funcional.



Overdenture



O'ring Calcinável
804105



Anel Calcinável
805105



Barra Calcinável
BARRA



Clip para Overdenture
CLIPTEC



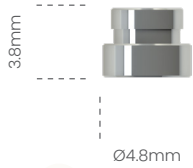
Clip 0°
CLIP0



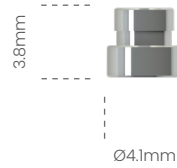
Clip 35°
CLIP35



Clip 70°
CLIP70



Cápsula Metálica O'ring
802105



Cápsula Metálica O'ring Mini
802105M



Anel O'ring para Cápsula Metálica
ORING2



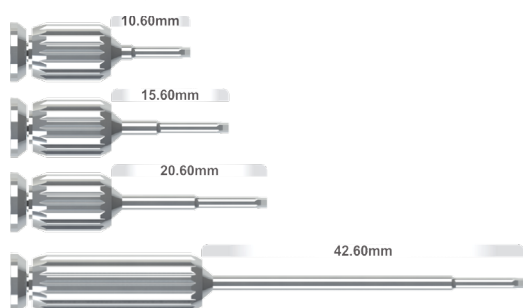
Anel O'ring para Cápsula Metálica Mini
ORING3



Cápsula Plástica
803105

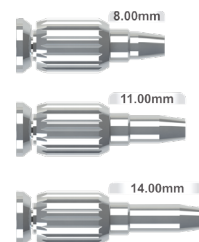
CHAVE DIGITAL

	Curta	Média	Longa	Extra Longa
Fenda	CDFC	-	CDFL	-
Hexagonal 0.9mm	CDH09C	CDH09M	CDH09L	-
Hexagonal 1.2mm	CDH12C	CDH12M	CDH12L	CDH12EL
Quadrada 1.3mm	CDQ13C	CDQ13M	CDQ13L	CDQ13EL
Neotorq	CDGMC	CDGMM	CDGML	CDGMEL
Torx	CDSTC	CDSTM	CDSTL	CDSTEL
Unigrip	CDUGC	CDUGM	CDUGL	CDUGEL
Dinâmica	CDDIC	CDDIM	CDDIL	-



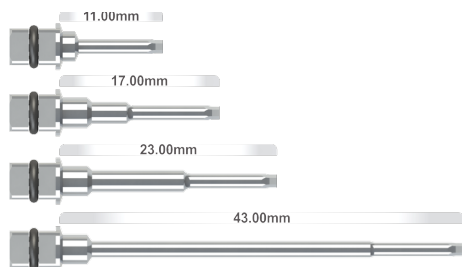
CHAVE DIGITAL MULT UNIT

Curta	Média	Longa	Extra Longa
CDMUC	CDMUM	CDMUL	-



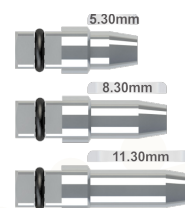
CHAVE TORQUÍMETRO

	Curta	Média	Longa	Extra Longa
Hexagonal 0.9mm	CTH09C	CTH09M	CTH09L	-
Hexagonal 1.2mm	CTH12C	CTH12M	CTH12L	CTH12EL
Hexagonal 1.6mm	CTH16C	CTH16M	CTH16L	-
Quadrada 1.3mm	CTQ13C	CTQ13M	CTQ13L	CTQ13EL
Neotorq	CTGMC	CTGMM	CTGML	CTGMEL
Torx	CTSTC	CTSTM	CTSTL	CTSTEL
Unigrip	CTUGC	CTUGM	CTUGL	-
Dinâmica	CTDIC	CTDIM	CTDIL	-



CHAVE TORQUÍMETRO MULT UNIT

Curta	Média	Longa	Extra Longa
CTMUC	CTMUM	CTMUL	-



MAIS INSTRUMENTAIS



Adaptador Digital Quadrado

ADQCT



Saca Implante

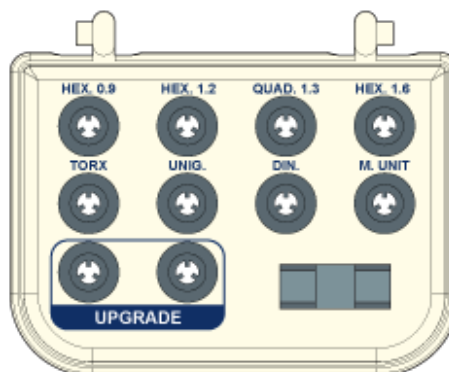
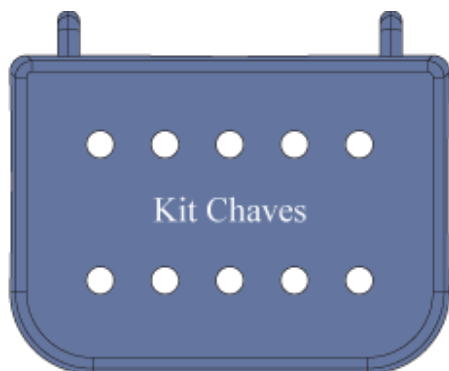
SIMP



Torquímetro 10 a 80 Ncm

TORQ

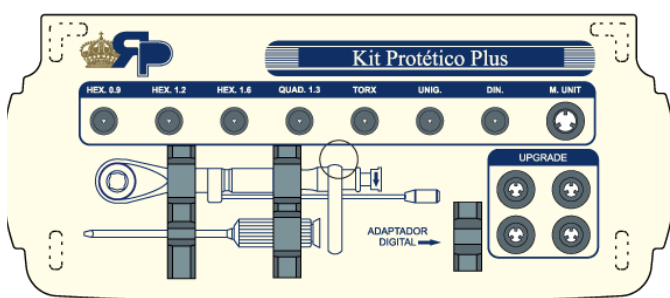
KIT DE CHAVES MULTIMARCAS



EKC	Estojo Kit Chaves
CTH09M	Chave Torquímetro Hexagonal 0.9mm Média
CTH12M	Chave Torquímetro Hexagonal 1.2mm Média
CTQ13M	Chave Torquímetro Quadrada 1.3mm Média
CTH16M	Chave Torquímetro Hexagonal 1.6mm Média

CTSTM	Chave Torquímetro Torx Média
CTUGM	Chave Torquímetro Unigrip Média
CTDIM	Chave Torquímetro DI Média
CTMUM	Chave Torquímetro p/ Multi-Unit Média
ADQCT	Adaptador Digital Quadrado para Chave de Torquímetro

KIT PROTÉTICO MULTIMARCAS



EKPP	Estojo Kit Protético Plus
CTH09M	Chave Torquímetro Hexagonal 0.9mm Média
CTH12M	Chave Torquímetro Hexagonal 1.2mm Média
CTQ13M	Chave Torquímetro Quadrada 1.3mm Média
CDH12EL	Chave Digital Hexagonal 1.2mm Extra Longa
CTH16M	Chave Torquímetro Hexagonal 1.6mm Média

CTSTM	Chave Torquímetro Torx Média
CTUGM	Chave Torquímetro Unigrip Média
CTDIM	Chave Torquímetro DI Média
CTMUM	Chave Torquímetro p/ Multi-Unit Média
ADQCT	Adaptador Digital Quadrado para Chave de Torquímetro
TORQ	Torquímetro 10 a 80N.cm



ESTAMOS SEMPRE À DISPOSIÇÃO,
ENTRE EM CONTATO E TIRE SUAS DÚVIDAS.

